

Atami Port



Kiunkaku

Photo: Atami News

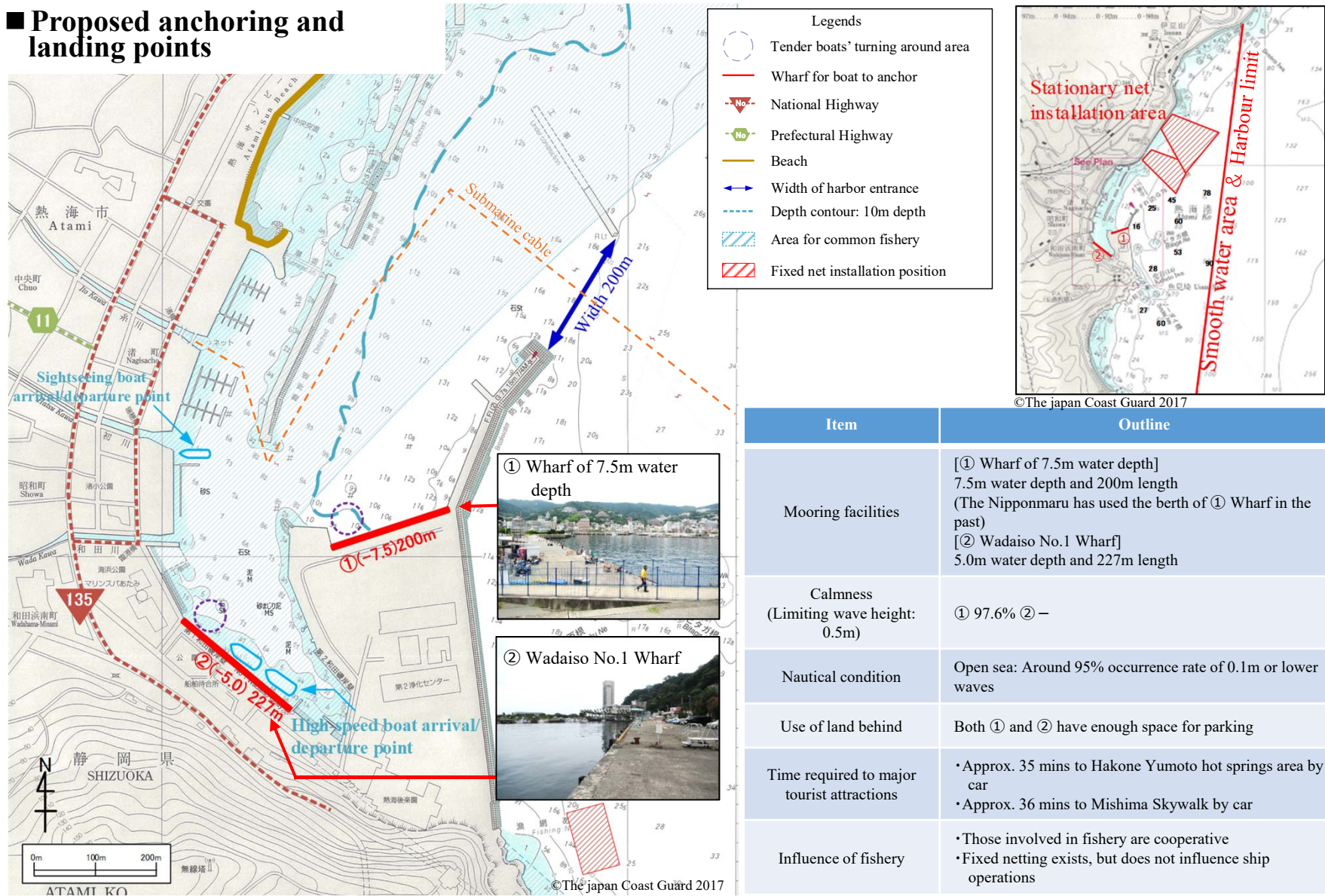
1. Location of Atami Port



Map: Google Maps

2. Overview of Atami Port

■ Proposed anchoring and landing points

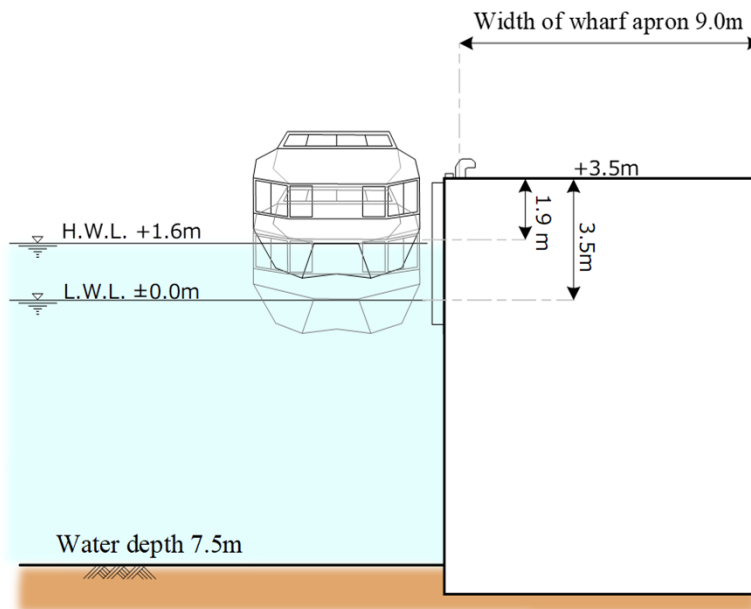


Item	Outline
Mooring facilities	[① Wharf of 7.5m water depth] 7.5m water depth and 200m length (The Nipponmaru has used the berth of ① Wharf in the past) [② Wadaiso No.1 Wharf] 5.0m water depth and 222m length
Calmness (Limiting wave height: 0.5m)	① 97.6% ② -
Nautical condition	Open sea: Around 95% occurrence rate of 0.1m or lower waves
Use of land behind	Both ① and ② have enough space for parking
Time required to major tourist attractions	• Approx. 35 mins to Hakone Yumoto hot springs area by car • Approx. 36 mins to Mishima Skywalk by car
Influence of fishery	• Those involved in fishery are cooperative • Fixed netting exists, but does not influence ship operations

3. Major Mooring Facilities

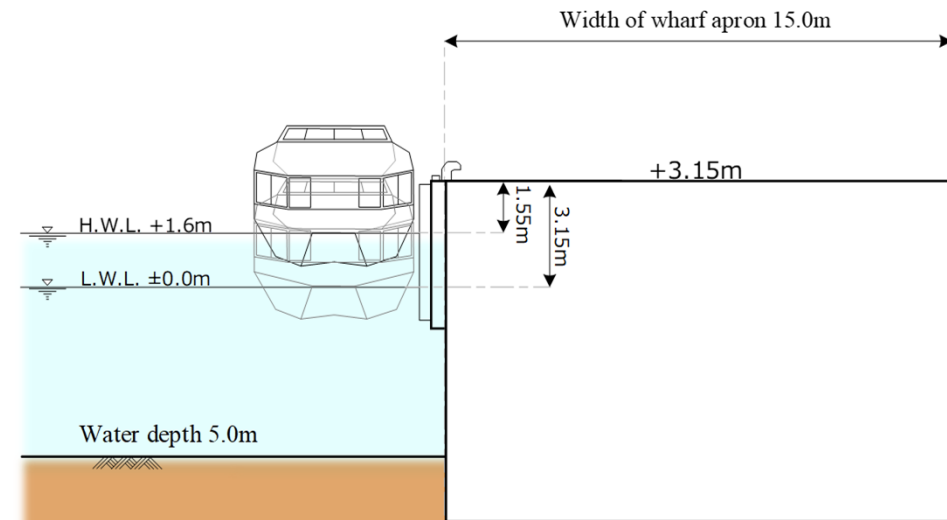
① Wharf of 7.5 meters water depth

Item	Outline
Berth size	[① 7.5 meters water depth] Water depth: 7.5m; and Total length: 200m Crown height: H.W.L.+1.6m+1.9m L.W.L.±0m +3.5m Apron width: 9.0m



② Wadaiso No.1 Wharf

Item	Outline
Berth size	[② Wadaiso No.1 Berth] Water depth: 5.0m; and Total length: 227m Crown height: H.W.L.+1.6m+1.55m L.W.L.±0m +3.15m Apron width: 15.0m



4. Atami Port Weather Conditions

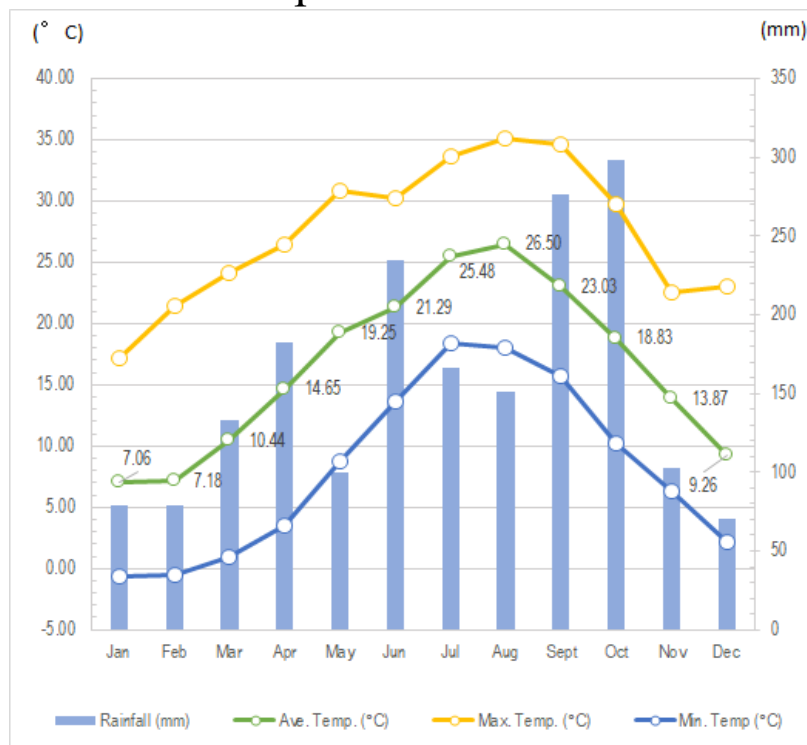
Suitable Port Call Timing (Weather Condition)	March – November
Events	<ul style="list-style-type: none"> • Strawberry picking January – May • Izuyama Shrine Annual Festival April 14 - 16 • Hatsushima Tokoroten Festival May 1 • Kinomiya Shrine Annual Festival July 14 - 16 • Atami Fireworks Festival Each season (including Aug. 5) • Mandarin Orange picking October – December



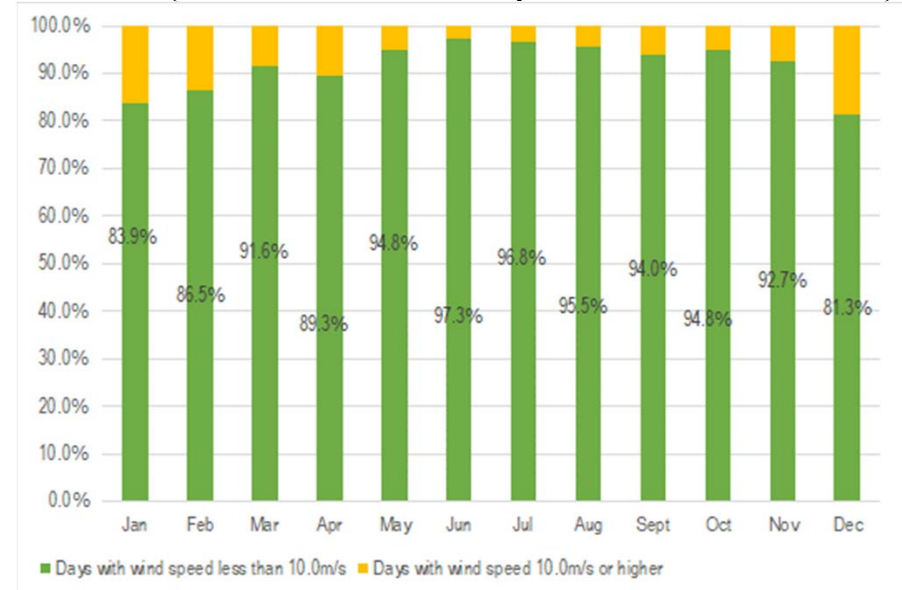
Best season for Atami Port

May - August

○ Rainfall/Temperature



○ Wind (Incidence of wind speed less than 10m/s*)



* Incidence of days when the wind speed during the ship passage period of 8:00 to 17:00 is less than 10.0m/s based on hearings from shipping companies.

5. Flow Planning (1) (Planned use of Wharf of 7.5m water depth)

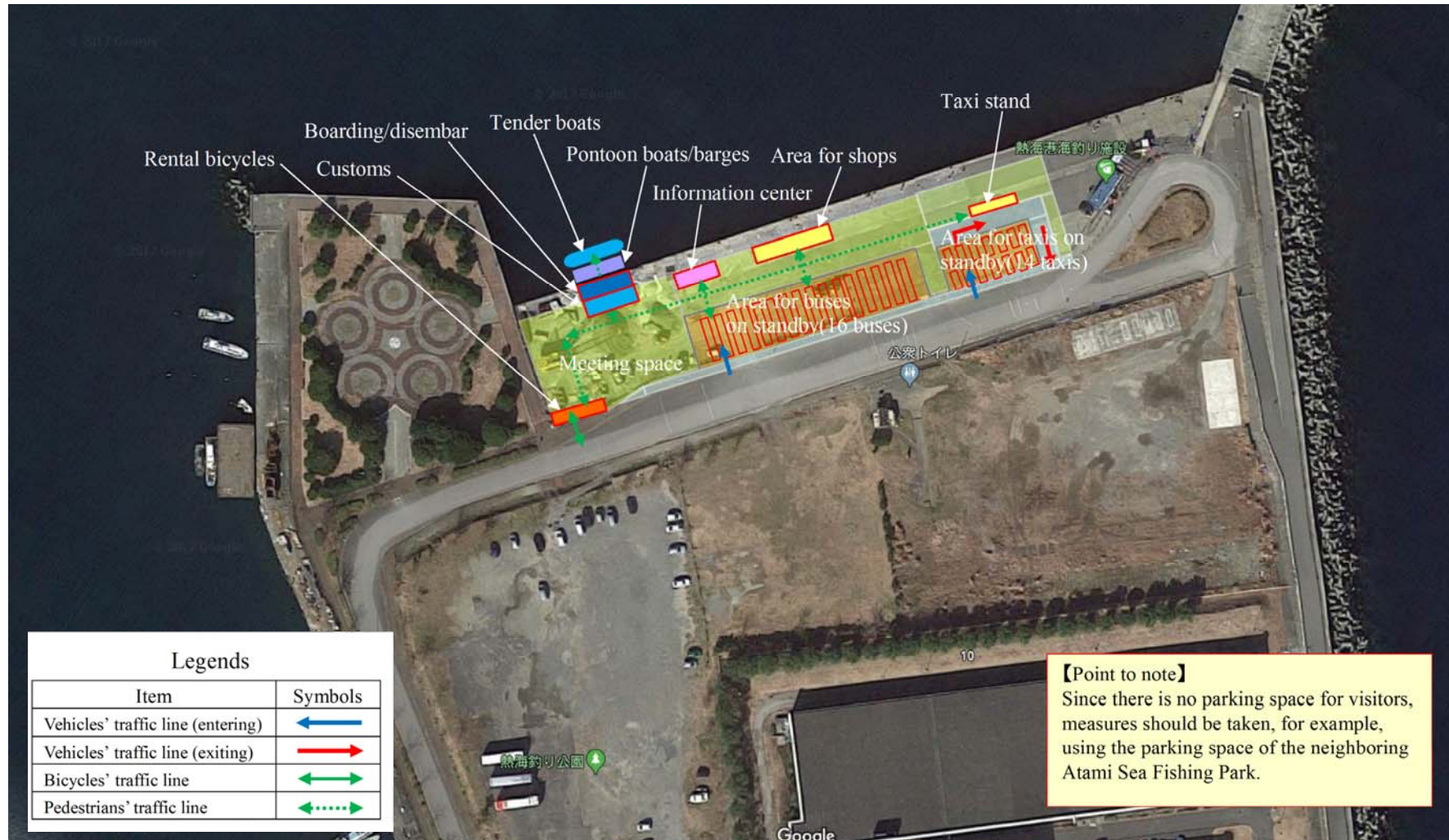
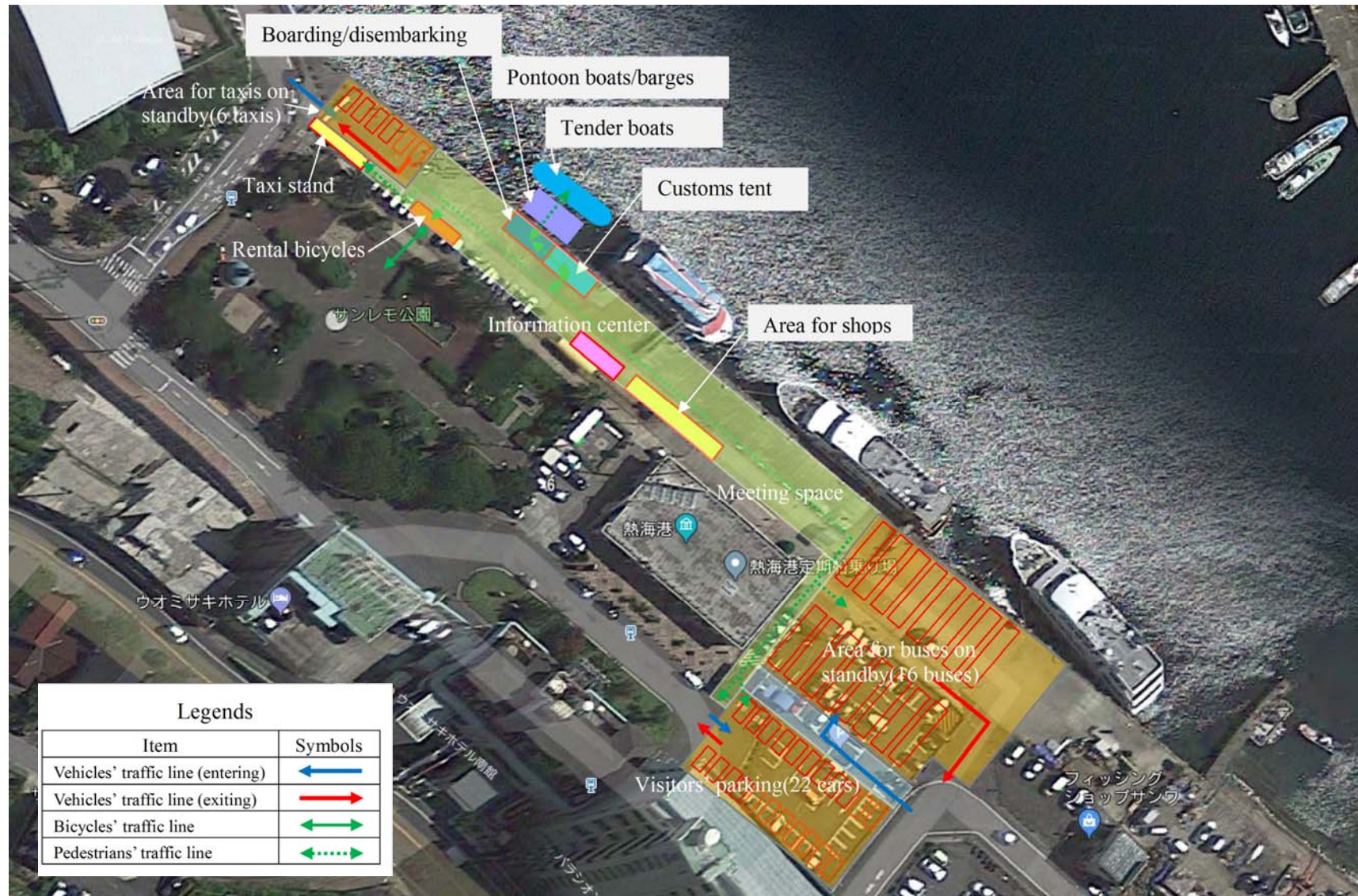


Photo: Google Earth

5. Flow Planning (2) (Planned use of Wadaiso No.1 Wharf)



Legends	
Item	Symbols
Vehicles' traffic line (entering)	← (Blue arrow)
Vehicles' traffic line (exiting)	→ (Red arrow)
Bicycles' traffic line	↔ (Green arrow)
Pedestrians' traffic line	⋯↔ (Green dotted arrow)

Photo: Google Earth

6. Regional Tourist Resources



10 mins from the Port
⑩ Atami Plum Garden
Parking: 100 cars
 Garden with a long history and famous for its early blooming blossoms and late autumn leaves.



15 mins from the Port
③ Jukkoku Pass
Parking: 320 cars and 22 large vehicles
 You can experience trekking while enjoying nature.



6 mins from the Port
⑫ Akao Herb & Rose Garden
Parking: 100 cars
 A grand expanse and paradise of flowers.



50 mins from the Port
⑬ Mishima Skywalk
Parking: 400 cars
 Japan's longest pedestrian suspension bridge.



12 mins from the Port
⑦ Izusan Shrine
Parking: 5 cars
 Shrine known as the birth place of the name of Izu area.



10 mins from the Port
⑧ MOA Museum of Art
Parking: 200 cars
 The collection includes the national treasure by Korin Ogata, "Red and White Plum Blossoms."



7 mins from the Port
⑨ Former Hyuga Bettei
Parking: None
 The only remaining architecture designed by Bruno Taut, a German architect, in Japan.



11 mins from the Port
⑬ Nagahama Seaside Park, Umieru Nagahama
Parking: 150 cars
 Locally grown vegetables and locally caught fish and dried seafood are offered.



21 mins from the Port
⑪ Oratche Farm
Parking: 100 cars and 13 large vehicles
 You can experience ice cream making.

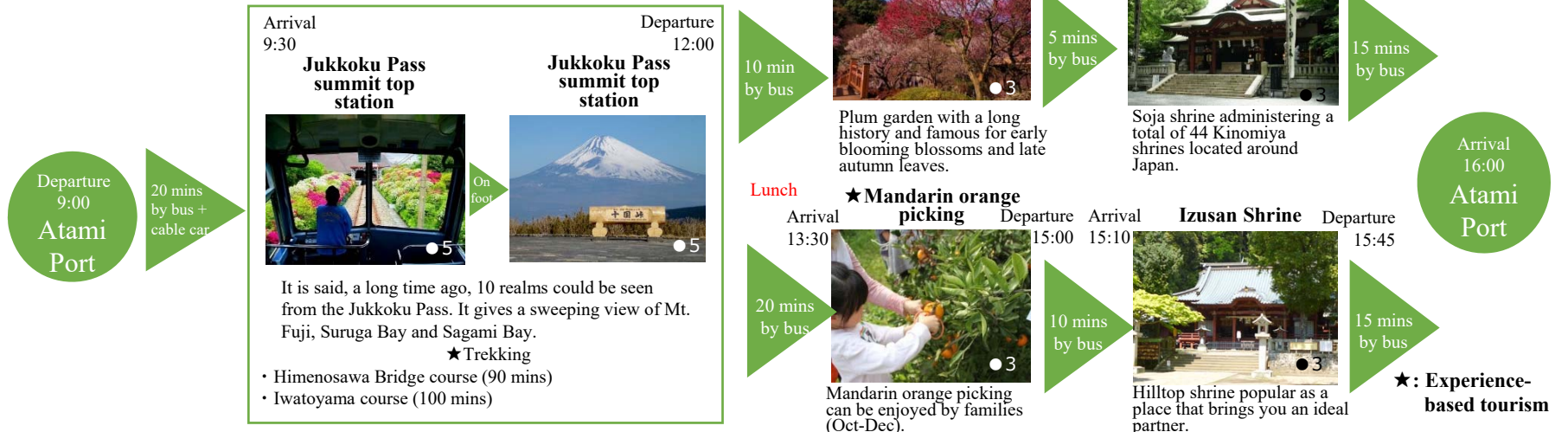


7. Optional Tour Plans ①

■ Nirayama Area and Ajiro Course (Time required: 7 hours)



■ Jukkoku Pass Course (Time required: 7 hours)



7. Optional Tour Plans ②

■ Mt. Fuji and Hakone Course (Time required: 7 hours)



7. Optional Tour Plans ③

■ Short Course Plan (Time required: 4 hours)

● Nirayama Course

Departure
9:00
Atami
Port

40 mins
by bus

Arrival 9:40

Walk in Nirayama area

Departure 12:20



40 mins
by bus

Arrival
13:00
Atami
Port

Visit the Nirayama Reverberatory Furnaces, designated as a world heritage site and the only remaining commercial reverberatory furnaces in Japan and experience making traditional hanging ornaments “hina no tsurushikazari”,

● Jukkoku Pass Course

Departure
9:00
Atami
Port

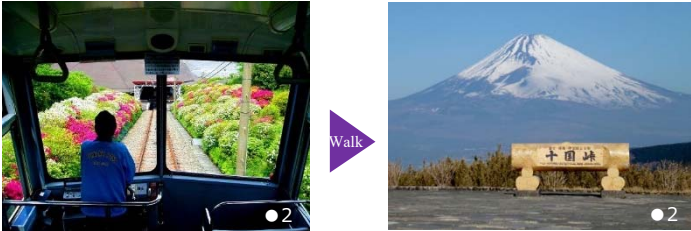
20 mins by
bus + cable
car

Arrival 9:30

Departure 11:30

Jukkoku Pass summit-top station

Jukkoku Pass summit-top station



Walk

It is said, a long time ago, 10 realms could be seen from the Jukkoku Pass, which still gives a sweeping view of Mt Fuji, Suruga Bay and Sagami Bay.

★ Trekking

- Himenosawa Bridge course (90 mins)
- Iwatoyama course (100 mins)

Arrival 11:50

Kinomiya Shrine

Departure 12:50



Soja shrine administering a total of 44 Kinomiya shrines located around Japan.

Atami Plum Garden



Garden with a long history and famous for early blooming blossoms and late autumn leaves.

15 mins by
bus + cable
car

10 mins
by bus

Arrival
13:00
Atami
Port

★:Experience-based tourism

8. Port Area Walking Courses



19 Sun Beach
Japan's first beach where nighttime illumination started.



16 Atami Seven Hot Springs
Hot springs gushing out along the sloping road.



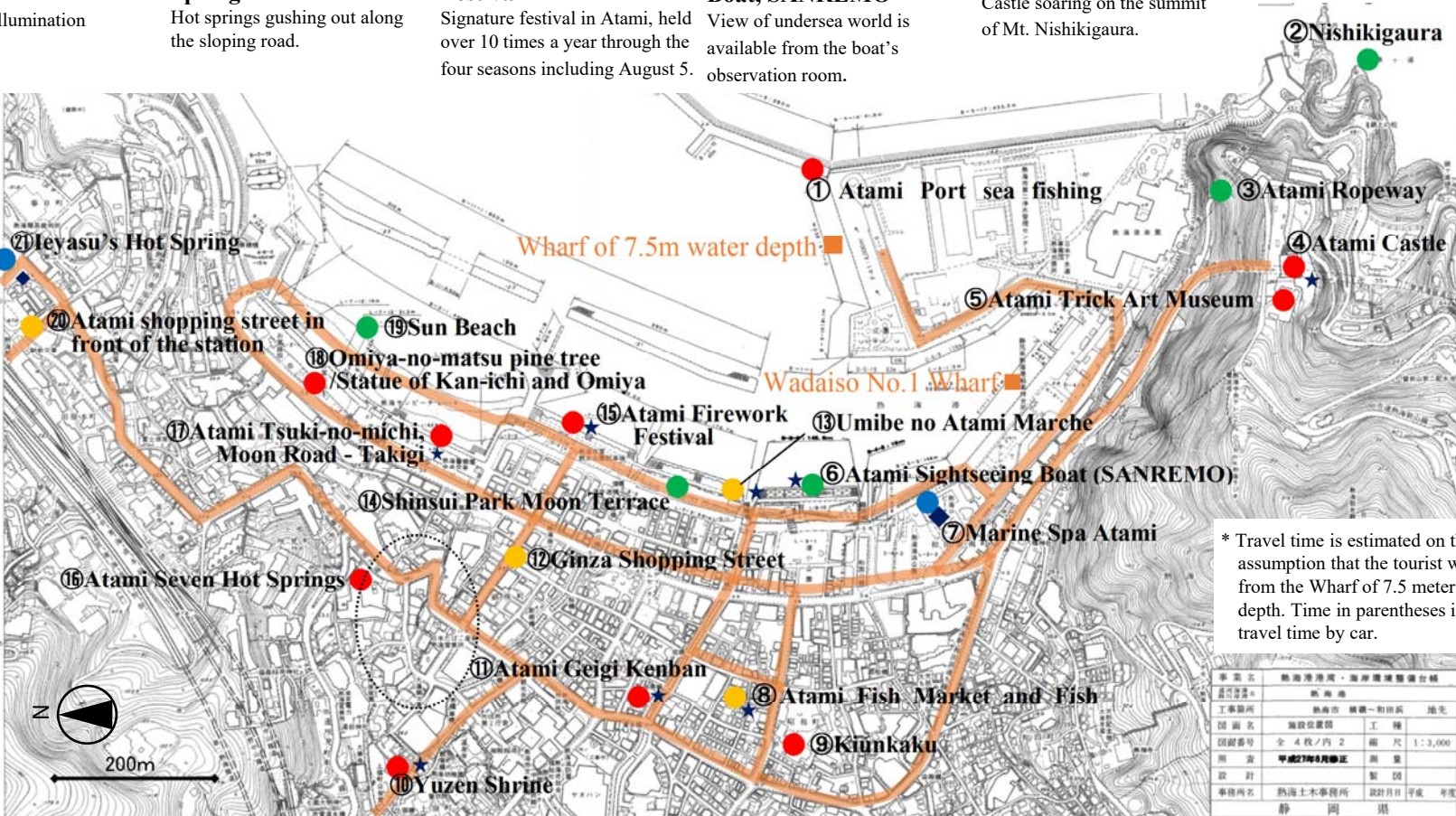
15 Atami Fireworks Festival
Signature festival in Atami, held over 10 times a year through the four seasons including August 5.



6 Atami Sightseeing Boat, SANREMO
View of undersea world is available from the boat's observation room.



4 Atami Castle
Castle soaring on the summit of Mt. Nishikigaura.



* Travel time is estimated on the assumption that the tourist walks from the Wharf of 7.5 meters water depth. Time in parentheses is the travel time by car.

事業名	熱海港開港・海岸環境整備台帳		
建設年度	昭和40年		
工事箇所	熱海市 横濱一和田浜 地先		
計画名	施設整備	工種	
図面番号	全 4 枚 / 内 2 冊	縮尺	1:3,000
調査	平成27年4月修正	測量	
設計		製図	
事務所名	熱海土木事務所	設計月日	平成 年 月 日
事務所	静岡 岡 県		