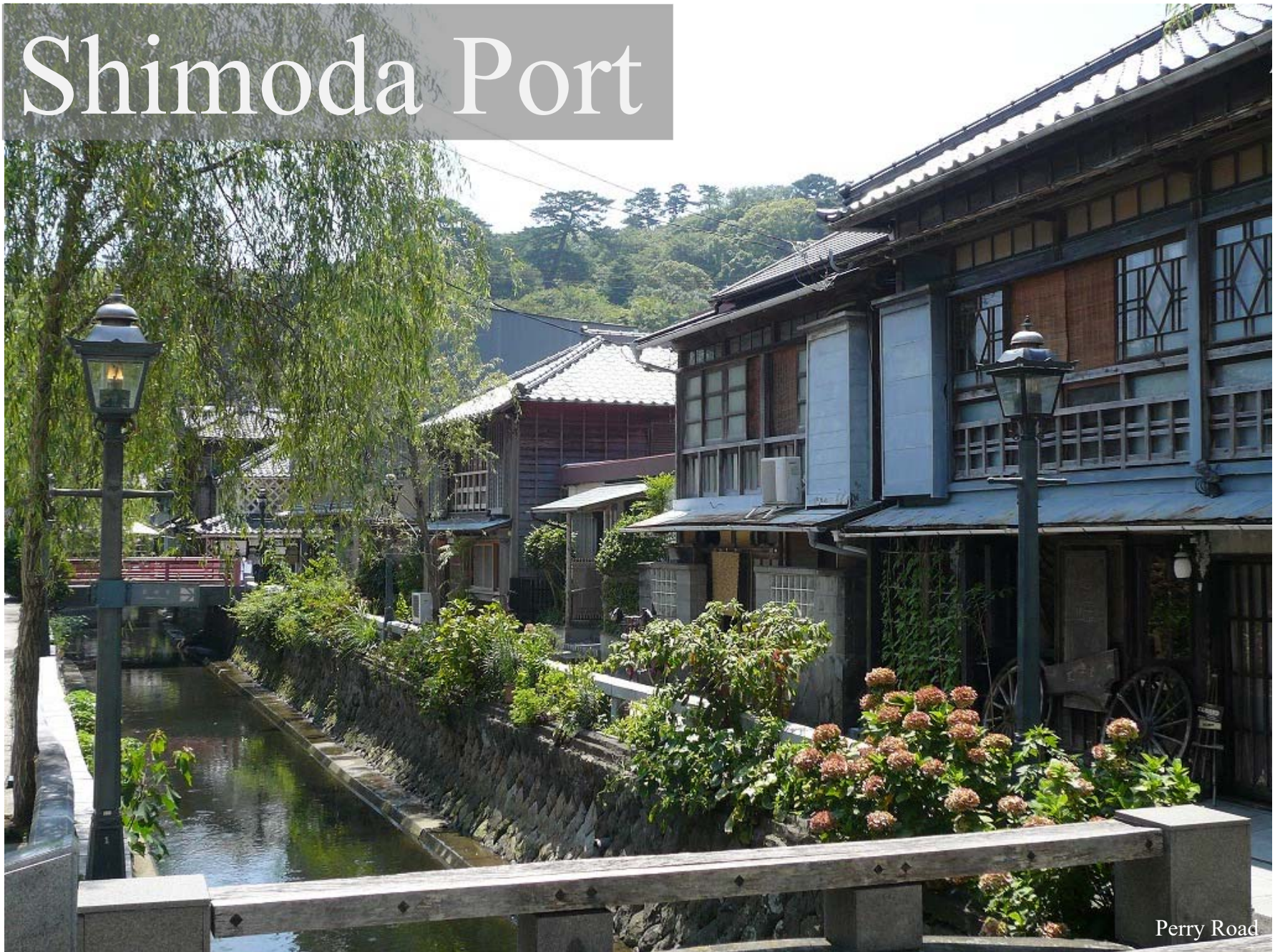


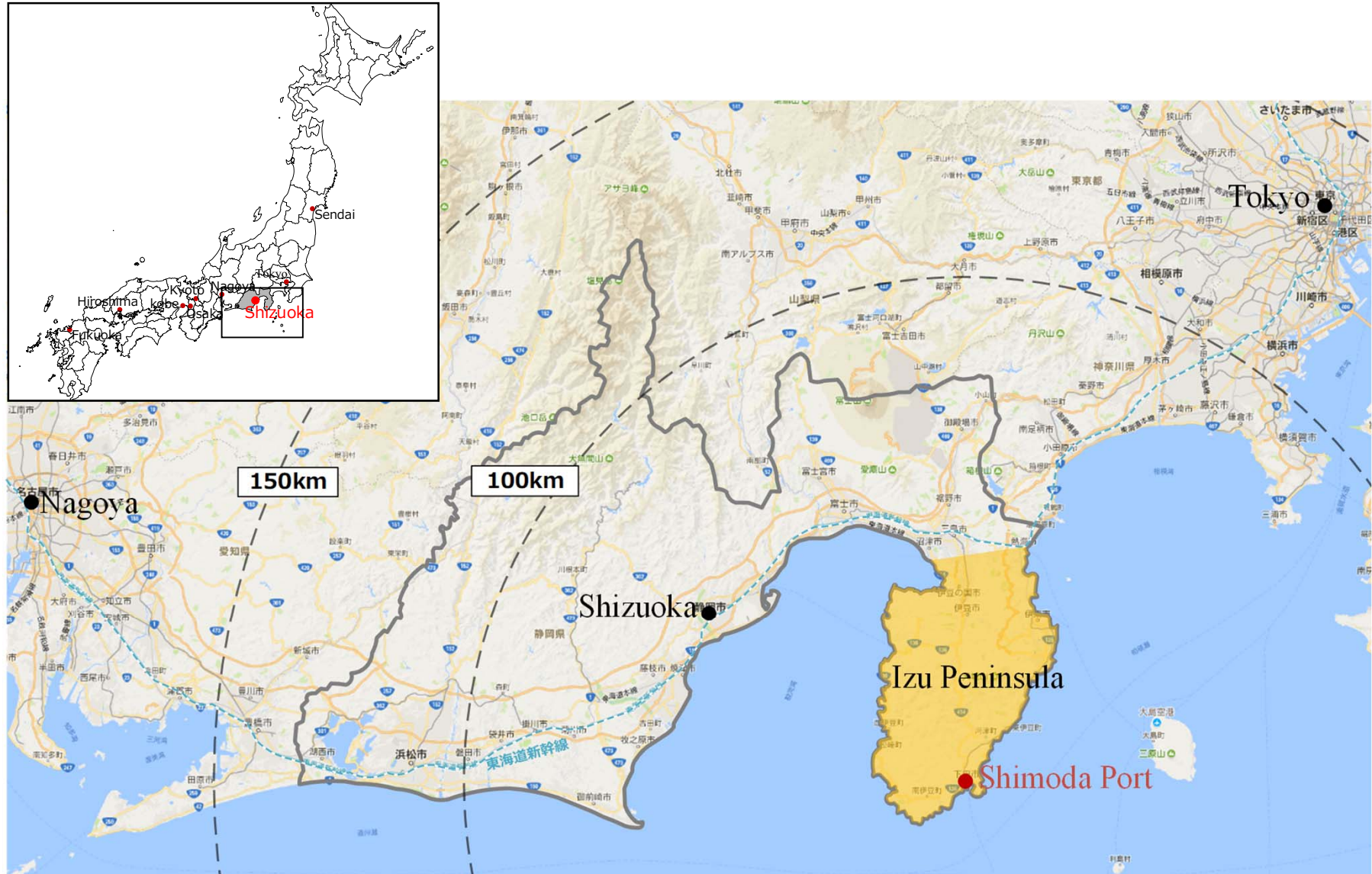
Shimoda Port



Perry Road

Photo: presented by Shimoda City










1. Location of Shimoda Port



Map: Google Maps

2. Overview of Shimoda Port

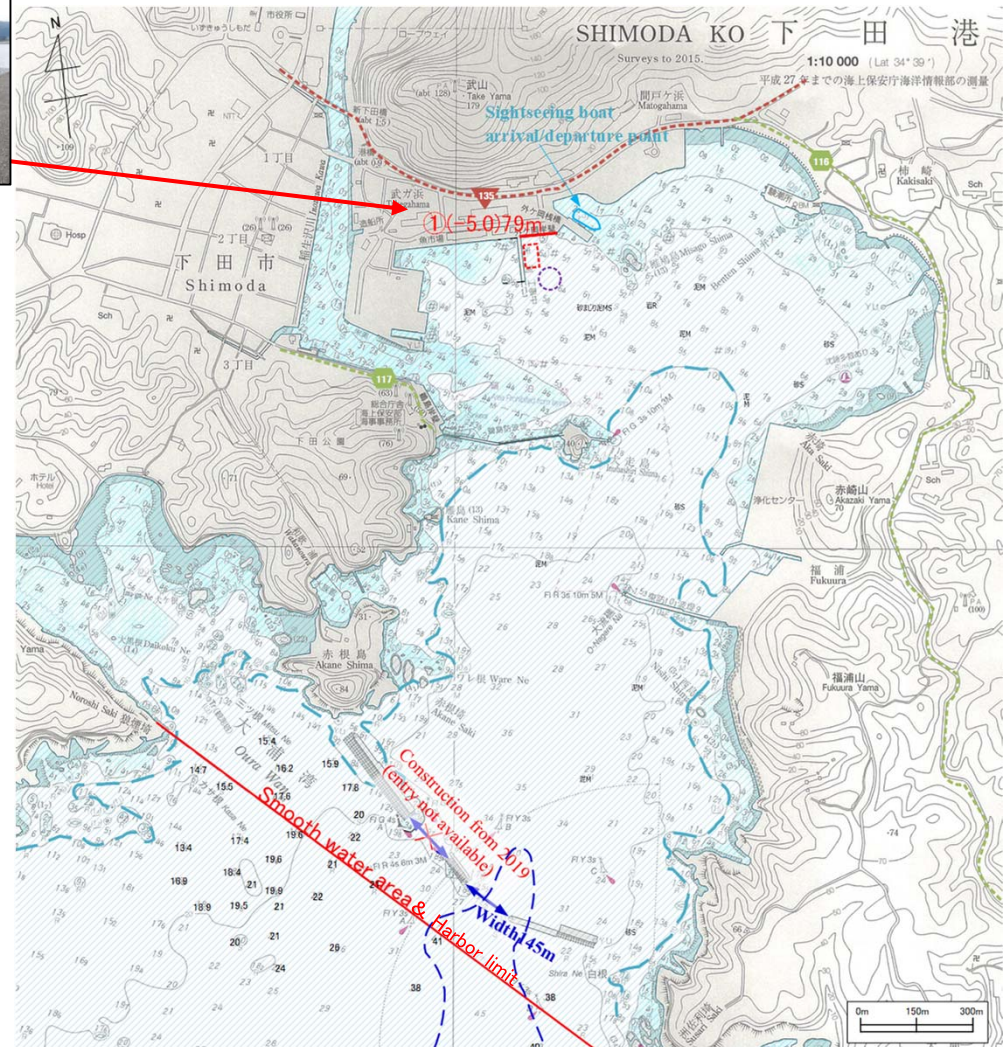
Legends

-  Tender boats' turning around area
-  Wharf for boat to anchor
-  National Highway
-  Prefectural Highway
-  Beach
-  Width of harbor entrance
-  Depth contour: 10m depth
-  Depth contour: 40m depth (Roughly determined area usable for anchoring)
-  Area for common fishery



① Sotogaoka Wharf (1)

Item	Outline
Mooring facilities	[①Sotogaoka Wharf (1)] 5.0m water depth and 79m length
Calmness (Limiting wave height: 0.5m)	①: 100%
Nautical condition	Open sea: Around 80% occurrence rate of 1.5m or lower waves Inside of breakwater: Around 80% occurrence of 0.5m or lower waves
Use of land behind	① has enough space for parking
Time required to major tourist attractions	<ul style="list-style-type: none"> • Approx. 11 mins to Ryugukutsu Cave by car • Approx. 42 mins to Joren-no-taki waterfall by car
Influence on fishery	<ul style="list-style-type: none"> • Those involved in fishery are cooperative • No fixed netting

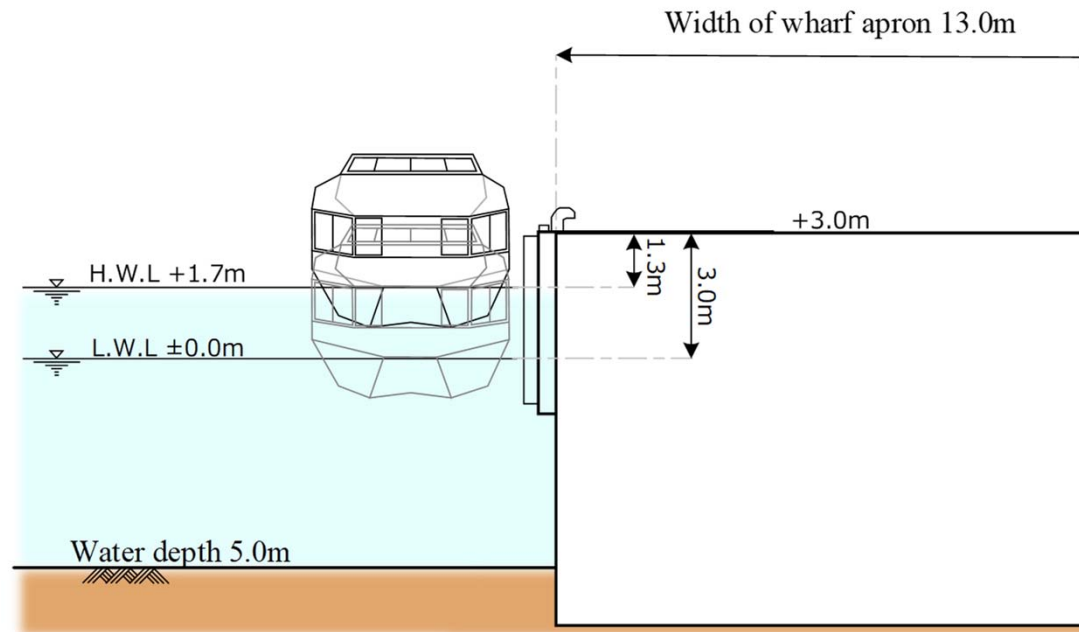


©The Japan Coast Guard 2017

3. Major Mooring Facility

① Sotogaoka Wharf (1)

Item	Outline
Berth size	【① Sotogaoka Wharf (1)】 Water depth: 5.0m; and Total length: 79m Crown height: H.W.L.+1.7m+1.3m L.W.L.±0.0m+3.0m Apron width: 13.0m



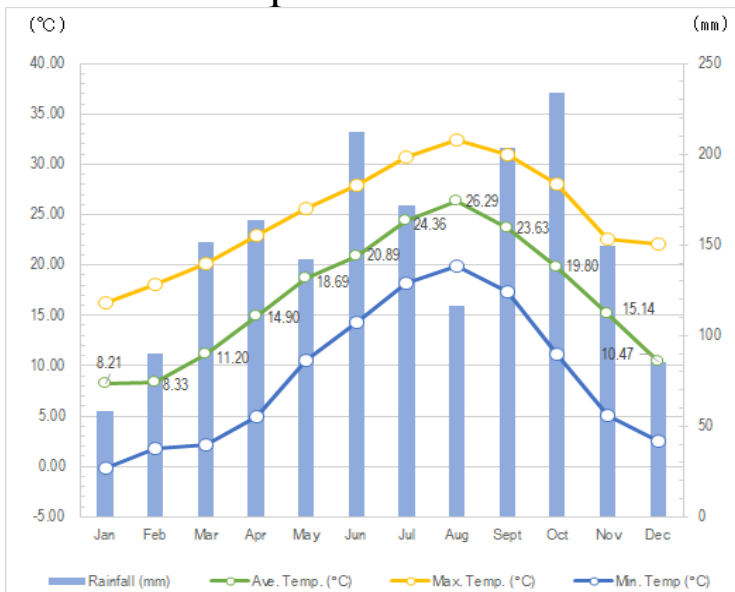
4. Shimoda Port Weather/Sea Conditions

Suitable Port Call Timing (Weather/Sea Conditions)	January, April – December
Events	<ul style="list-style-type: none"> • Black Ship Festival Days before and after the third Saturday of May • Hydrangea Festival June • Shimoda Taiko (Japanese Drum) Festival August 14 - 15 • Narcissus Festival Late December – Early February

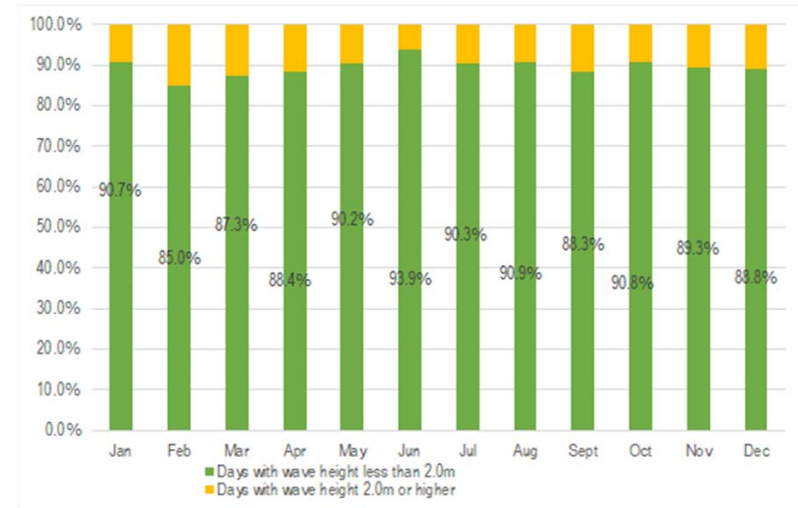
Best season for Shimoda Port

May – August

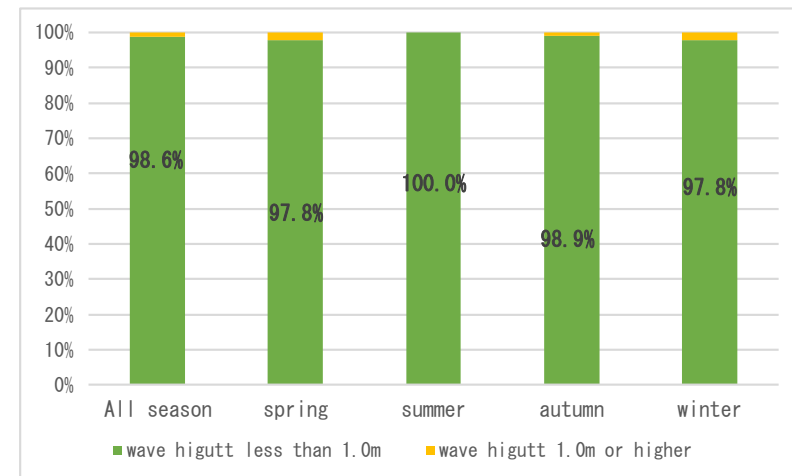
○ Rainfall/Temperature



○ Inside Waves (Incidence of wave height less than 2m*)



○ Outside Waves (Incidence of wave height less than 1m)



* Incidence of days when the wave height during the ship passage period of 8:00 to 17:00 is less than 10.0m/s based on hearings from shipping companies.

5. Flow Planning (Planned use of Sotogaoka Wharf (1))



Photo: Google Earth

6. Regional Tourist Resources



15 Cape Tsumekizaki
Parking: 200 cars
 One of the best scenic spots of Shizuoka Prefecture located at the tip of Suzaki Peninsula.



21 Hirizo Beach
 Bathing beach famous for its extraordinary transparent seawater which is only accessible by boat.



18 Sand Skiing field
Parking: 10 cars
 Natural sand skiing field created by natural phenomenon.



11 Shirahama Shrine
Parking: 60 cars
 The oldest shrine in Izu with more than 2,400 years of history.



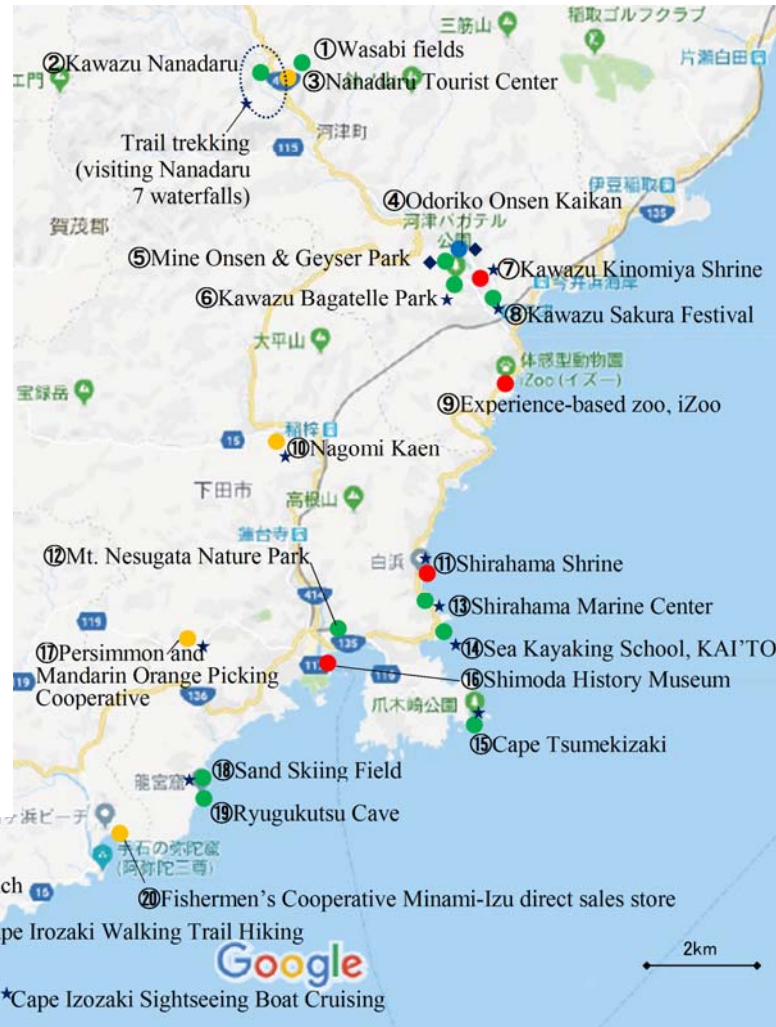
7 Kawazu Kinomiya Shrine
Parking: 10 cars
 You can find a large camphor tree designated as a national natural monument.



9 Japan's first experience-based zoo, iZoo
Parking: Available for cars and large vehicles
 Japan's largest zoological park of reptiles and amphibians.



4 Odoriko Onsen Kaikan
Parking: 50 cars
 You can enjoy cherry blossoms from an open-air bath.



- Natural environment
- History, tradition and culture
- Hot springs
- Food
- ★ Experience-based tourism and seasonal events
- ◆ Hot bath facilities



10 Nagomi Kaen
Parking: 10 cars and 1 large vehicle
 You can experience strawberry picking from December to May.



20 Fishermen's Cooperative Minami-Izu direct sales store
Parking: 20 cars
 If you want to buy the seafood symbolic of Minami-Izu, Ise-ebi lobster, this is the place.

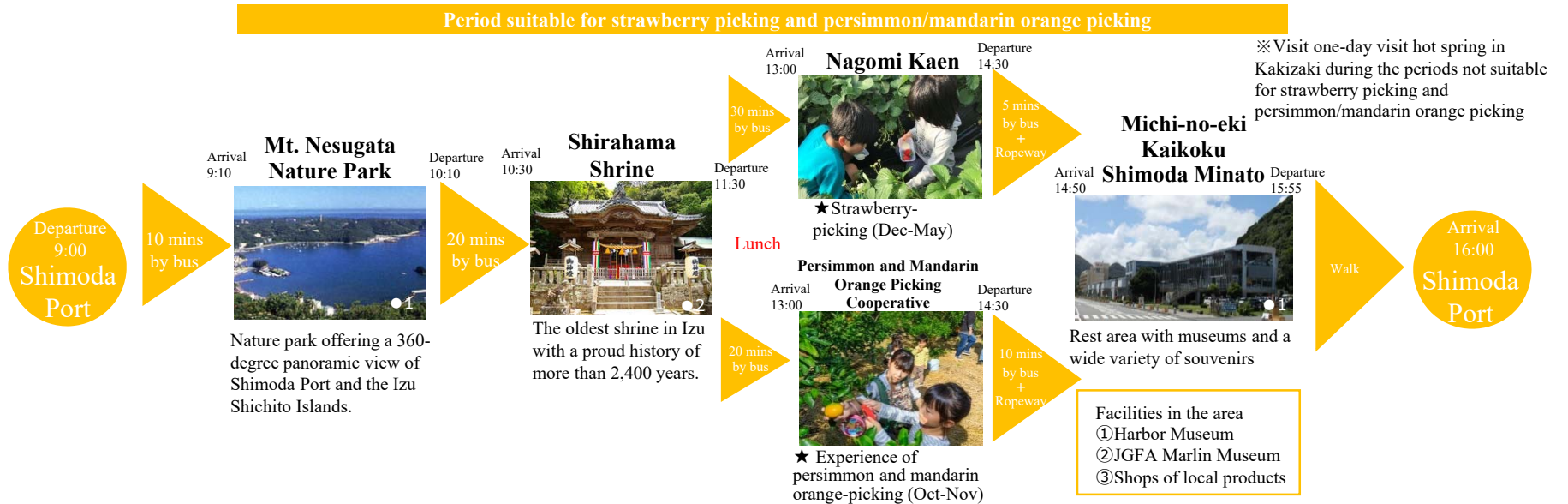


3 Nanadaru Tourist Center
Parking: 60 cars and 10 large vehicles, Seating: 202 persons
 You can enjoy gourmet menus featuring wasabi.

Map: Google Maps

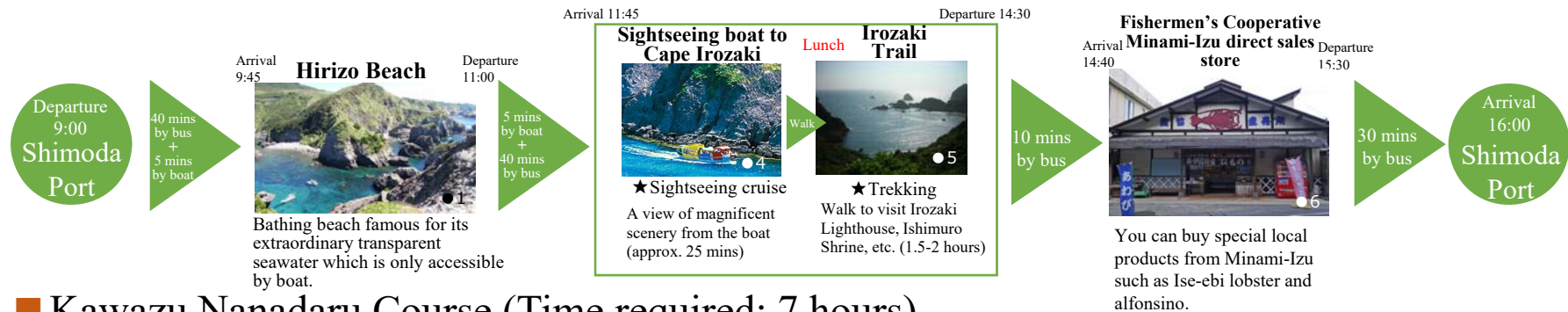
7. Optional Tour Plans ①

■ Fruit Picking and “Enjoy the Sea” Courses (Time required: 7 hours)

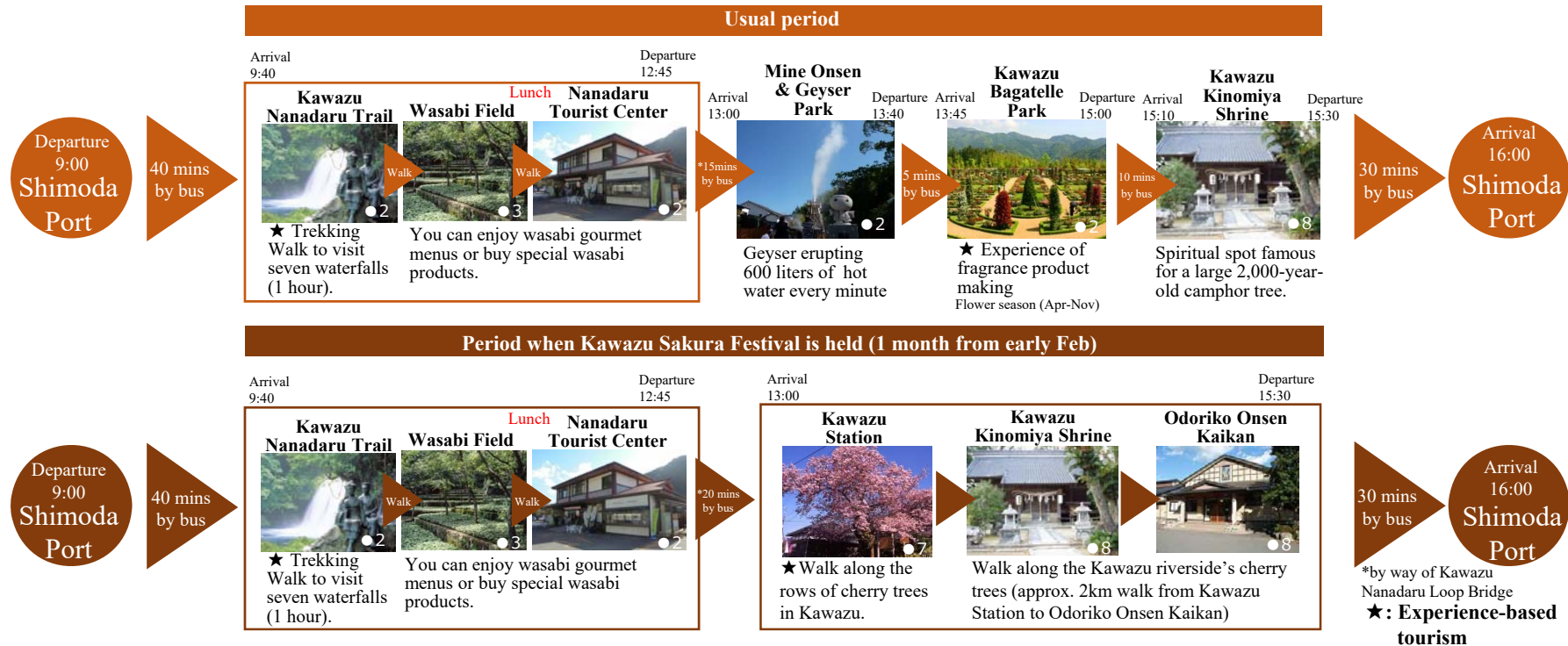


7. Optional Tour Plans ②

■ Minami-Izu Scenic Spots Course (Time required: 7 hours)

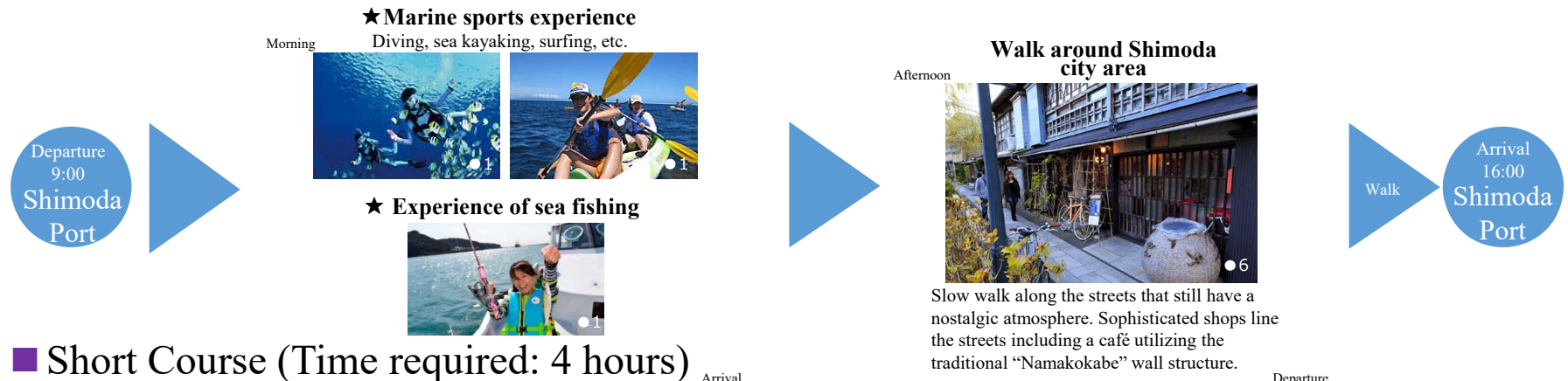


■ Kawazu Nanadaru Course (Time required: 7 hours)



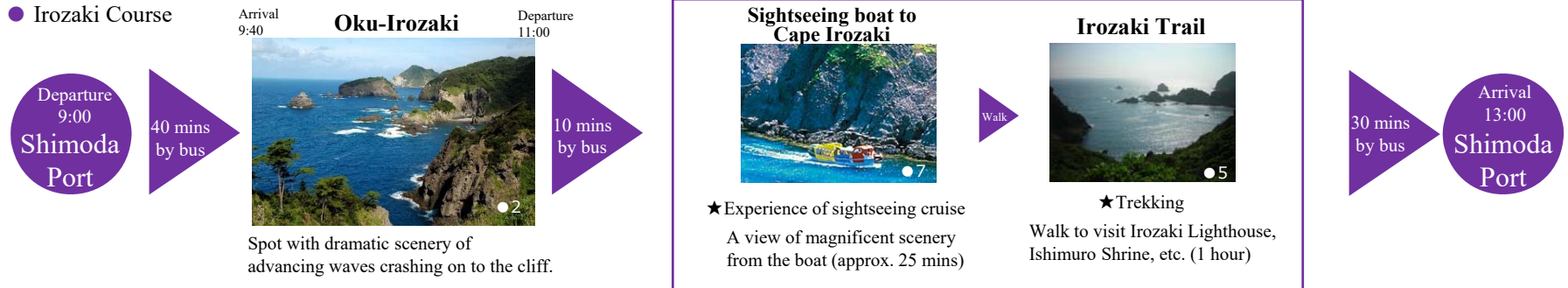
7. Optional Tour Plans ③

■ Marine Sports Experience Course (Time required: 7 hours)

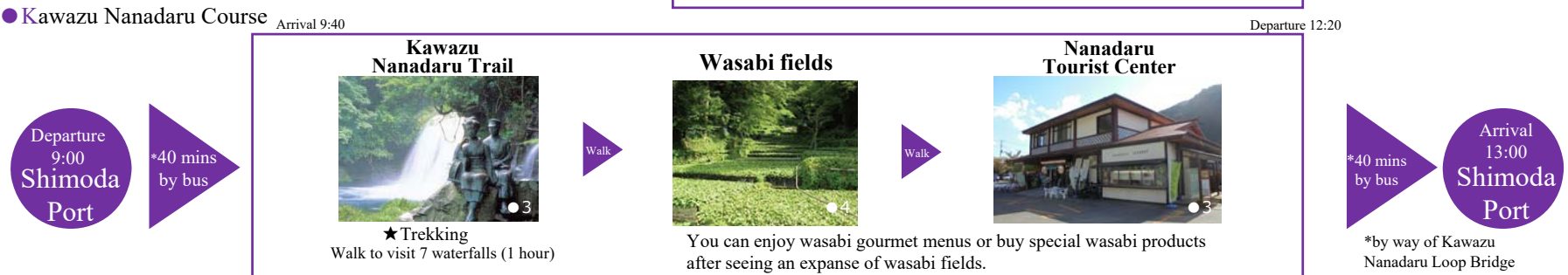


■ Short Course (Time required: 4 hours)

● Irozaki Course



● Kawazu Nanadaru Course



★: Experience-based tourism

8. Port Area Walking Courses



12 (3) mins from the Port
27 Shimoda Ropeway
 Aerial lift from which you can enjoy a magnificent bird's-eye view of Shimoda.



1 mins from the Port
17 Kurofune Sightseeing Boat, Izu Cruise
 Offering a ride to "Cruise around Shimoda Port".



15 (4) mins from the Port
8 Perry Road
 Retro-inspired townscape featuring namako wall architectures.



1 mins from the Port
18 Michi-no-eki, Kaikoku Shimoda Minato
 Michi-no-eki rest area right in front of Shimoda Port.



19 (5) mins from the Port
26 Shimoda Kaikoku Museum
 Museum with about 2,000 exhibits relating to the opening of the Port.



26 (5) mins from the Port
2 Shimoda Aquarium
 Aquarium created by using the natural inlet.



5 (2) mins from the Port
10 Kurofune Fireworks Festival
 Breathtaking fireworks festival in which fireworks are set off incessantly from four locations.
 [Held in the third week of May]

