

Matsuzaki Port



1. Location of Matsuzaki Port



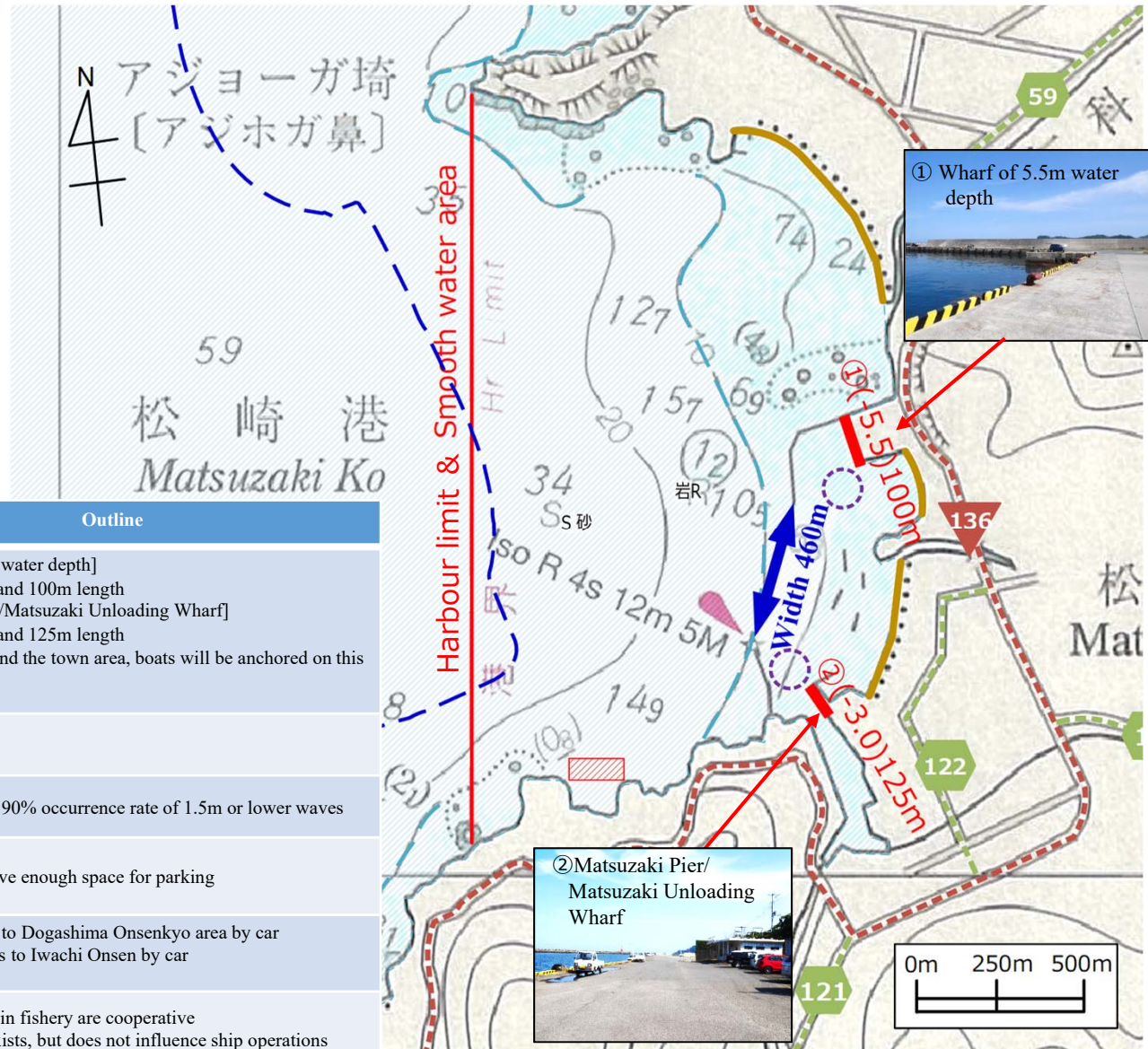
Map: Google Maps

2. Overview of Matsuzaki Port

Proposed anchoring and landing points

Legends	
	Tender boats' turning around area
	Wharf for boat to anchor
	National Highway
	Prefectural Highway
	Beach
	Width of harbor entrance
	Depth contour: 10m depth
	Depth contour: 40m depth (Roughly determined area usable for anchoring)
	Area for common fishery
	Fixed net installation position

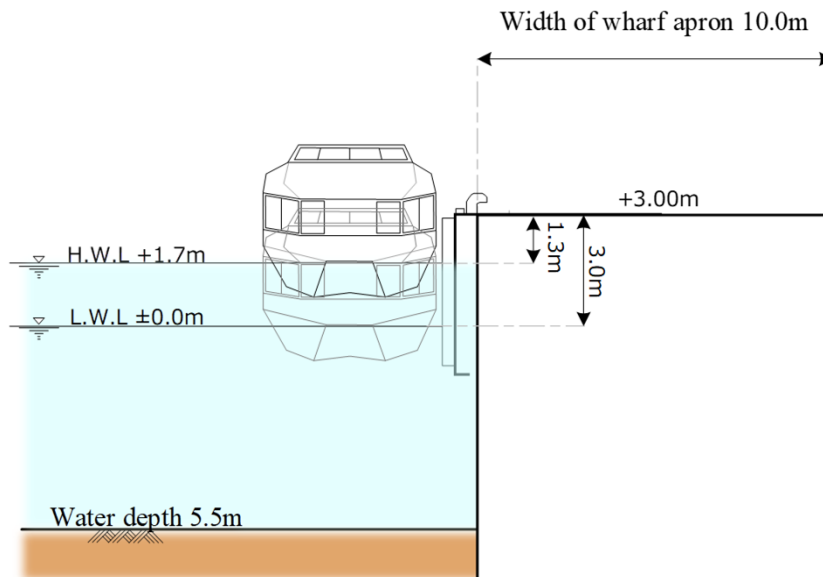
Item	Outline
Mooring facilities	[① Wharf of 5.5m water depth] 5.5m water depth and 100m length [② Matsuzaki Pier/Matsuzaki Unloading Wharf] 3.0m water depth and 125m length (During walk around the town area, boats will be anchored on this side)
Calmness (Limiting wave height: 0.5m)	① 93.0% ② -
Nautical condition	Open sea: Around 90% occurrence rate of 1.5m or lower waves
Use of land behind	Both ① and ② have enough space for parking
Time required to major tourist attractions	• Approx. 5 mins to Dogashima Onsenkyo area by car • Approx. 15 mins to Iwachi Onsen by car
Influence on fishery	• Those involved in fishery are cooperative • Fixed netting exists, but does not influence ship operations



3. Major Mooring Facility

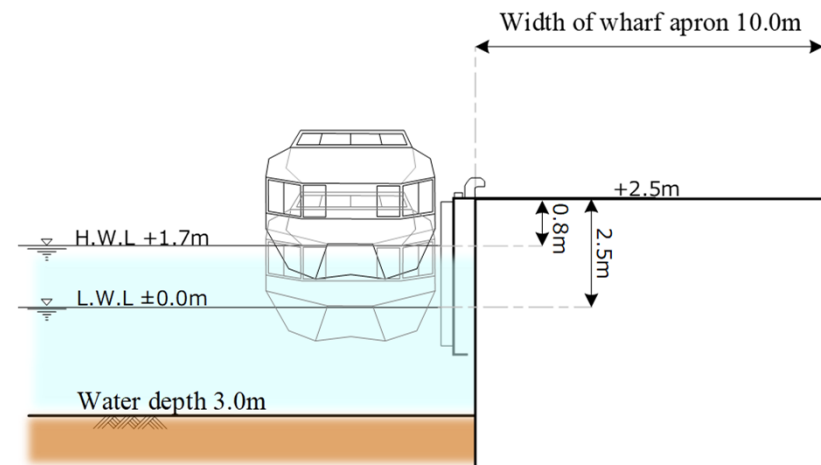
① Wharf of 5.5m water depth

Item	Outline
Berth size	[① Wharf of 5.5 meters water depth] Water depth: 5.5m; and Total length: 100m Crown height: H.W.L.+1.7m +1.3m L.W.L.±0.0m +3.0m Apron width: 10.0m



② Matsuzaki Pier/Matsuzaki Unloading Wharf

Item	Outline
Berth size	[② Matsuzaki Pier/Matsuzaki Unloading Wharf] Water depth: 3.0m; and Total length: 125m Crown height: H.W.L.+1.7m +0.8m L.W.L.±0.0m +2.5m Apron width: 10.0m



4. Matsuzaki Port Weather Conditions

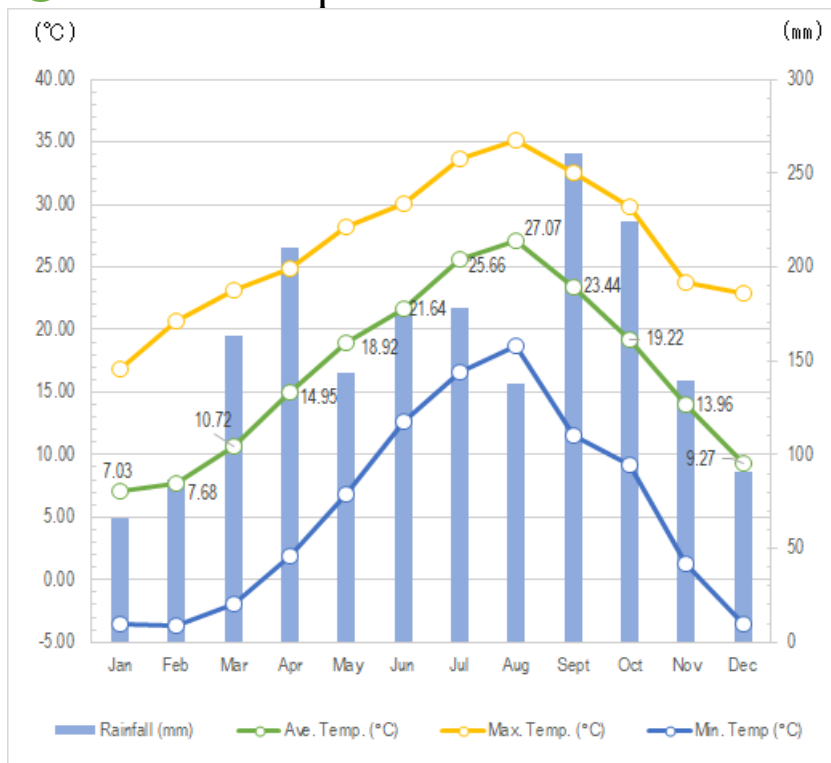
Suitable Port Call Timing (Weather Condition)	Throughout the year
Events	<ul style="list-style-type: none"> • Rows of Cherry Trees along Naka River March - April • Flower garden in paddy fields March - May • Beach seine drawing experience Besides July - August (except during the period suitable for sea bathing) • Hydrangea in Ushibara Chomin-no-mori June - July



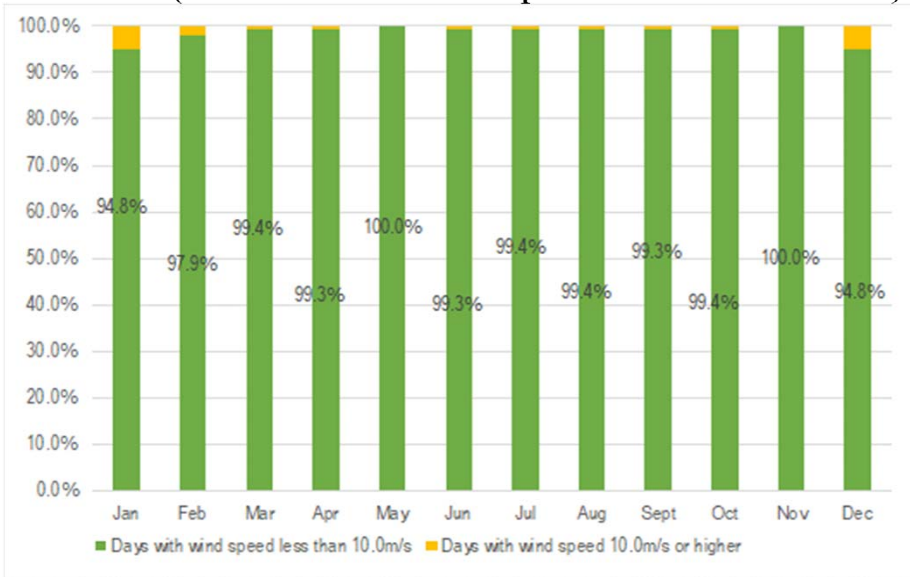
Best season for Matsuzaki Port

March - July

○ Rainfall/Temperature

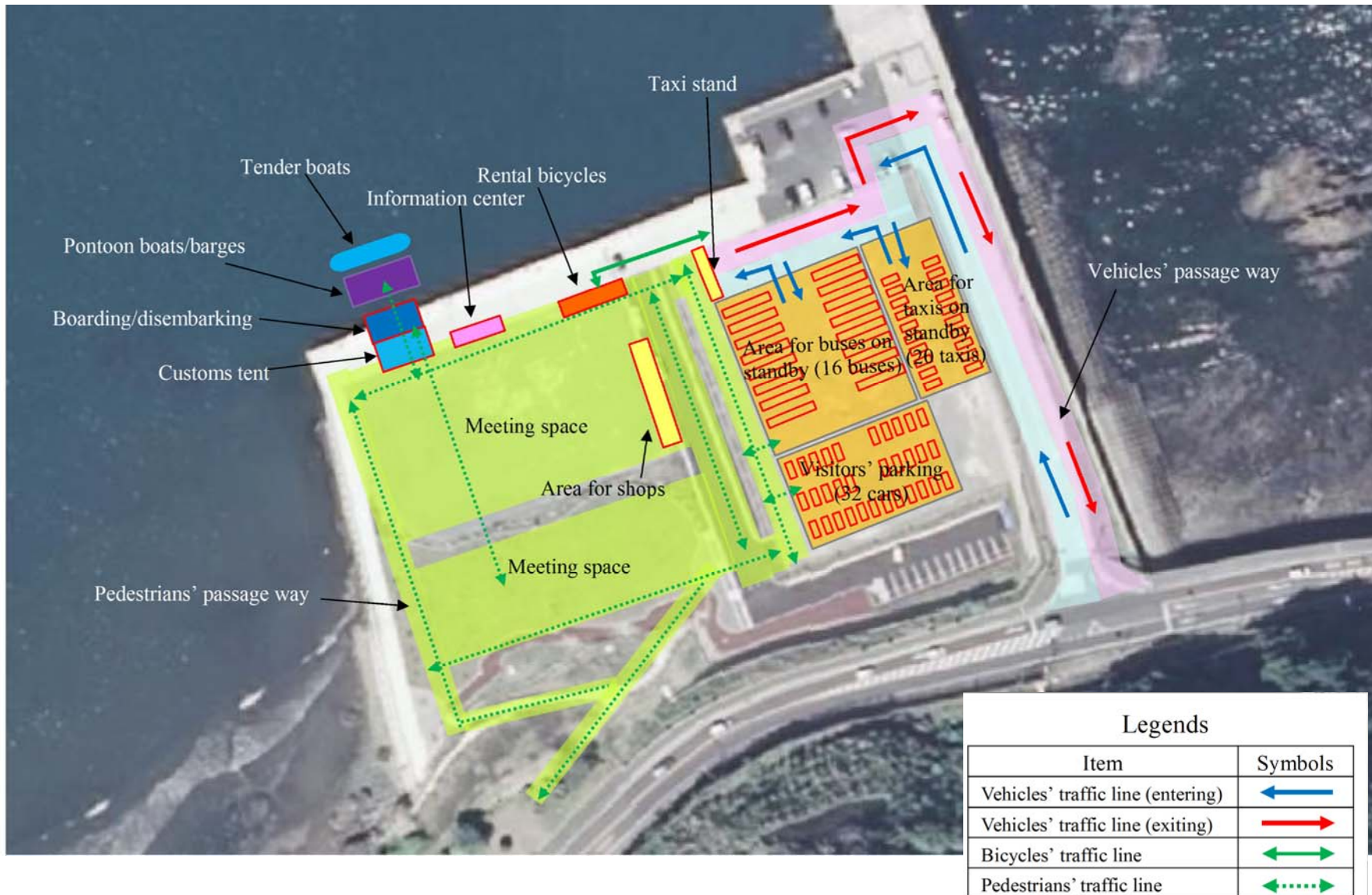


○ Wind (Incidence of wind speed less than 10m/s*)



* Incidence of days when the wind speed during the ship passage period of 8:00 to 17:00 is less than 10.0m/s based on hearings from shipping companies.

5. Flow Planning (1) (Planned use of Wharf of 5.5m water depth)



5. Flow Planning (2) (Planned use of Matsuzaki Pier/Matsuzaki Unloading Wharf)

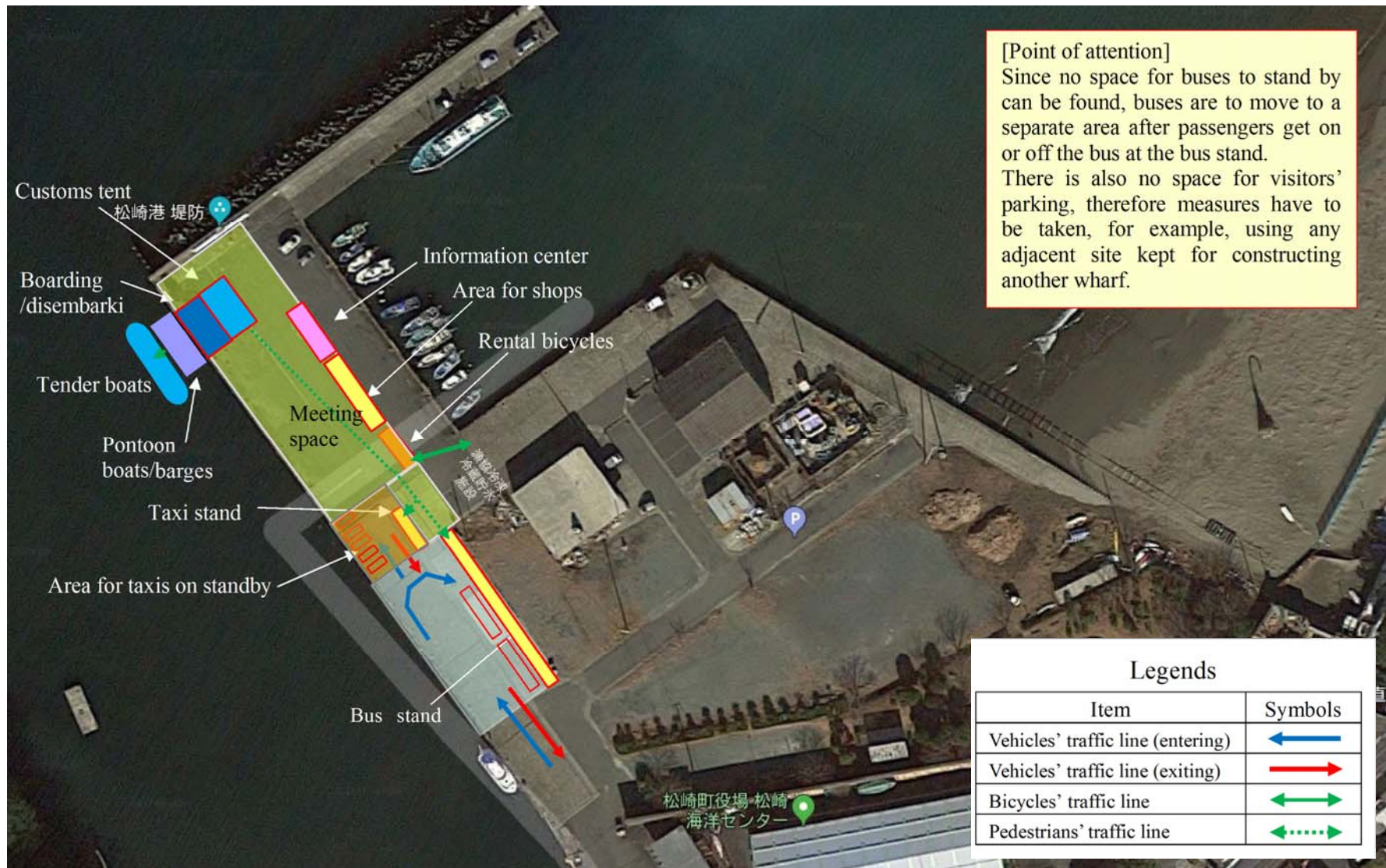


Photo: Google Earth

6. Regional Tourist Resources



8 mins from the Port

① Sanshiro Island

Parking: 10 cars

Island designated as a natural important treasure of Shizuoka Prefecture for its rare “tomboro” phenomenon.



11 mins from the Port

⑫ Ushibara Chomin-no-mori

Parking: 5 cars

One of the greatest spots offering magnificent scenery in Nishi-Izu famous for hydrangea flowers.



4 mins from the Port

⑪ Muroiwado Cave

Parking: 2 cars

Quarry visitors can see in the form unchanged from the time it was actually used in the past.



3 mins from the Port

⑧ Flower garden in paddy fields

Parking: 60 cars

Paddy fields are filled with flowers during the agricultural off-season. You can enjoy flower-picking, free of charge, from May 1 to May 5.



6 mins from the Port

⑬ Iwashina Elementary

School Parking: 20 cars

The oldest elementary school in Izu area designated as an important cultural property.



27 mins from the Port
(12 mins by car + 15 mins walk)

⑲ Senganmon

Parking: none

Huge natural gate which is part of a volcanic neck.

- Natural environment
- History, tradition and culture
- Hot springs
- Food
- ★ Experience-based tourism and seasonal events
- ◆ Hot bath facilities



6 mins from the Port

③ Dogashima Shokudo

Parking: 16 cars / Seating: 50 persons

Restaurant operated by local fishermen. You can eat tokoroten as much as you want.



10 mins from the Port

⑦ Osawaso Yamanoie

Parking: 15 cars

Secret hideaway-like onsen hotel where you can enjoy relaxing bath in a natural environment.



7 mins from the Port

⑨ Michi-no-eki Sanseien

Parking: 84 cars and 5 large vehicles

Seating: 45 persons

Michi-no-eki where you can enjoy special local products and onsen hot bath.



19 mins from the Port

⑮ Rice Paddy Terrace of Ishibu

Parking: 20 cars

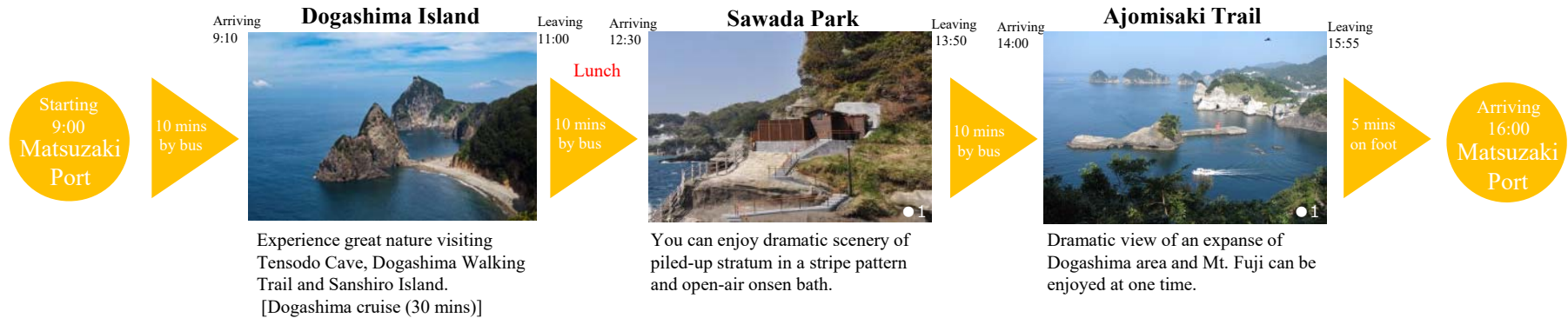
Magnificent view of terraced rice paddy fields overlooking Mt. Fuji and Suruga Bay below.



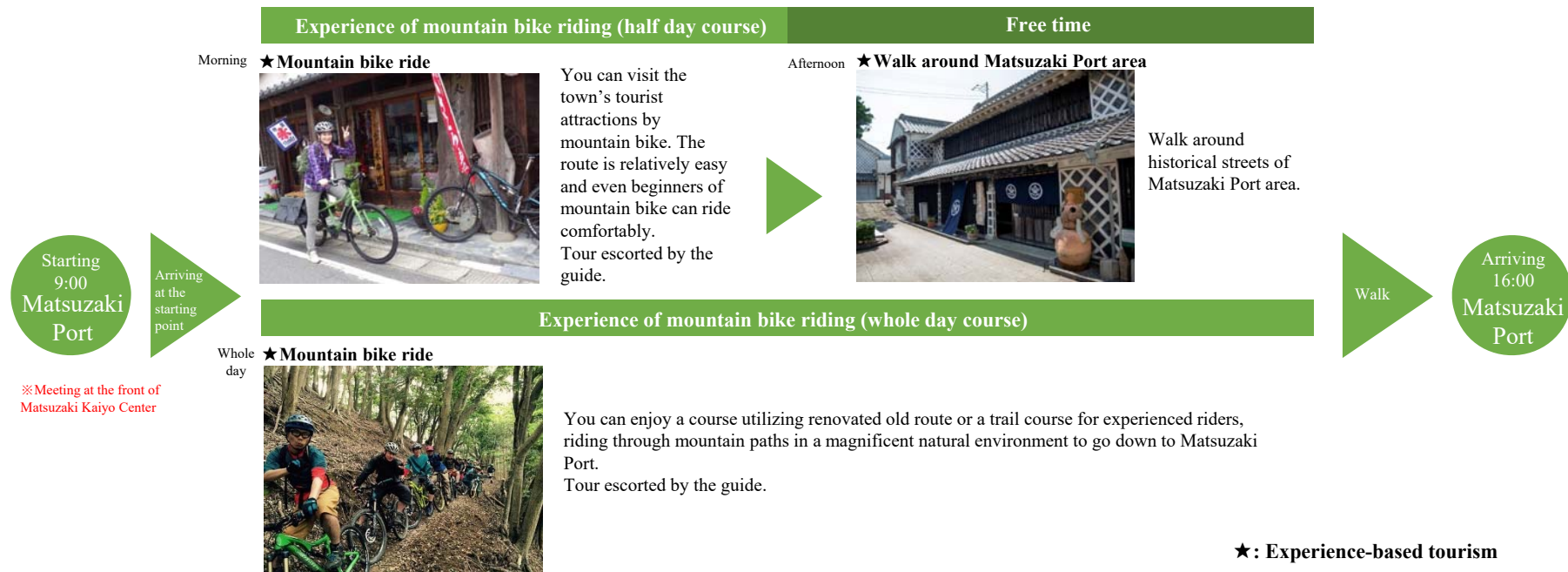
Map: Google Maps

7. Optional Tour Plans ①

■ Dogashima Area Geosite Course (Time required: 7 hours)



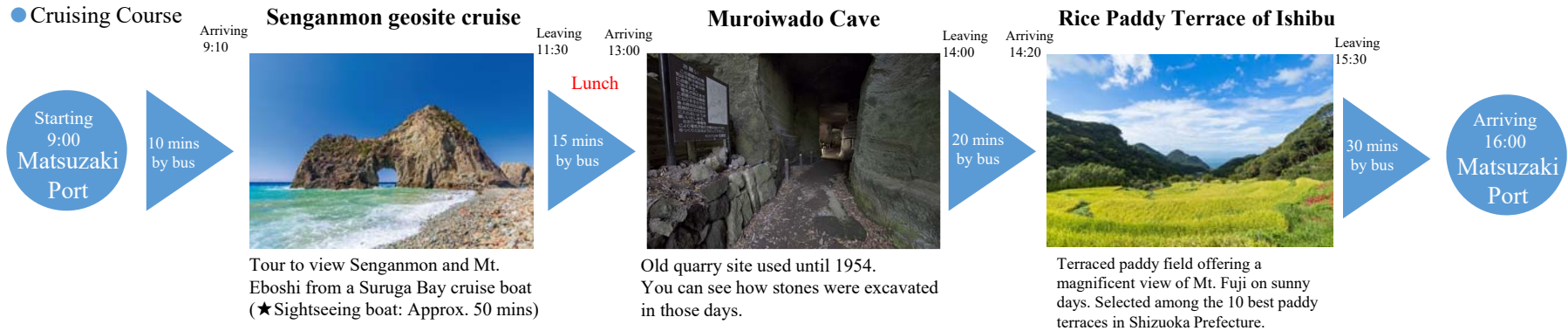
■ Mountain Bike Tour Experience Course (Time required: 7 hours)



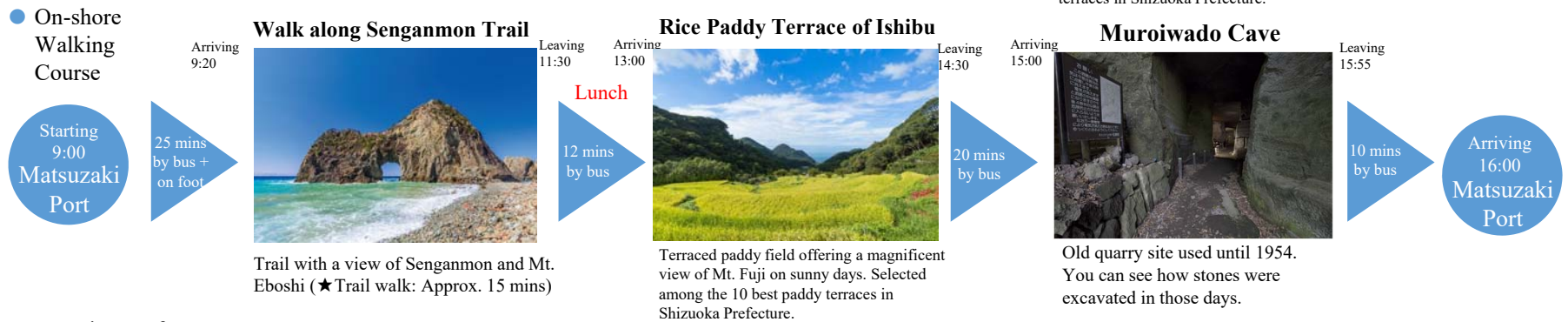
7. Optional Tour Plans ②

Iwachi, Ishibu and Kumomi Geosite Course (Time required: 7 hours)

● Cruising Course



● On-shore Walking Course



● Experience of beach seine fishing course



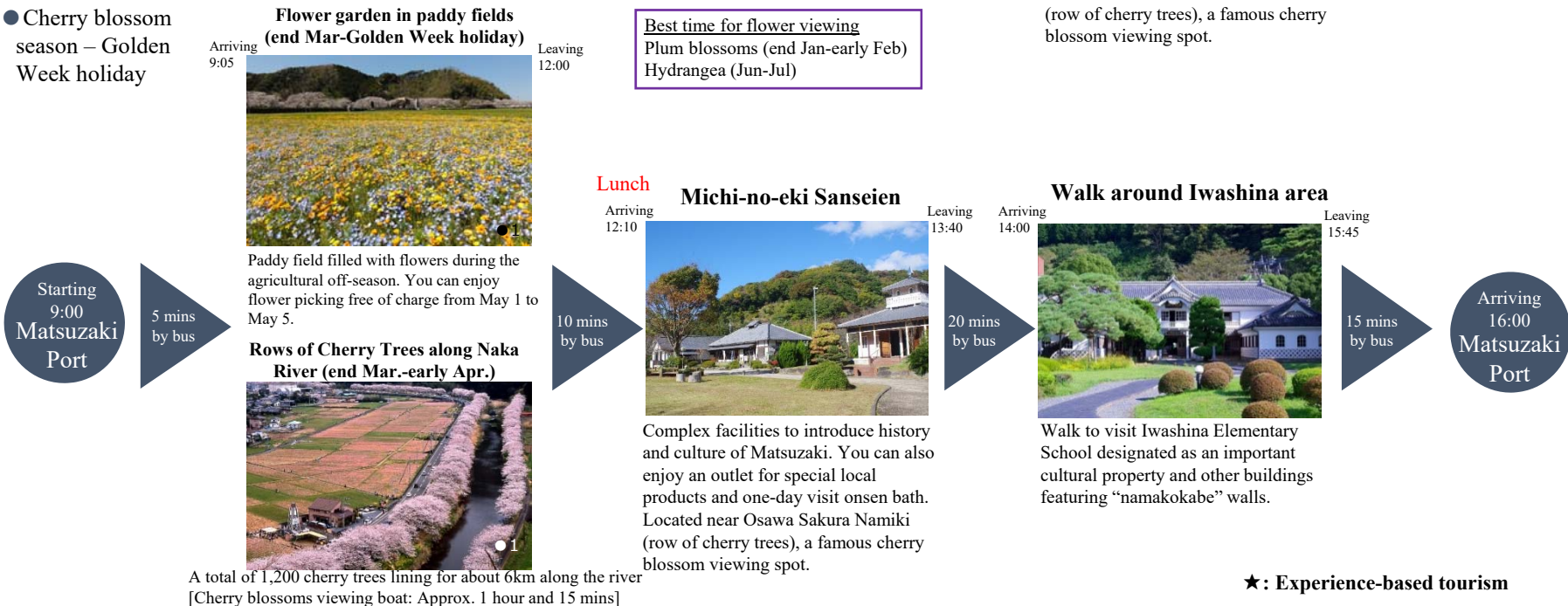
7. Optional Tour Plans ③

■ Flowers and History Course (Time required: 7 hours)

● Usual period



● Cherry blossom season – Golden Week holiday



Best time for flower viewing
Plum blossoms (end Jan-early Feb)
Hydrangea (Jun-Jul)

★: Experience-based tourism

7. Optional Tour Plans ④

■ Short Course (Time required: 4 hours)

● Matsuzaki Spots of Interest Course

Starting
9:00
Matsuzaki
Port

10 mins
by bus

Arriving 9:10 **Dogashima Island** Leaving 11:00



Walk along Dogashima walking trail.
[★Dogashima Cruise: Approx. 30 mins]

20 mins
by bus



Tour to view Senganmon and Mt. Eboshi from Suruga Bay. [★Sightseeing boat: Approx. 50 mins]

Arriving 11:20 **Walk around Iwashina Area** Leaving 12:50



Walk to visit Iwashina Elementary School designated as an important cultural property and other buildings featuring “namakokabe” walls.

10 mins
by bus

Arriving
13:00
Matsuzaki
Port

● Ushibarayama Course

Starting
9:00
Matsuzaki
Port

5 mins
by bus

Arriving 9:05 **Ushibara Chomin-no-mori** Leaving 11:00



Panoramic view of Suruga Bay, Mt. Fuji and Southern Alps from the summit. Different flowers can be enjoyed from season to season. [Walk: Approx. 30 mins to the summit]

40 mins
by bus

Arriving 11:20 **Rice Paddy Terrace of Ishibu** Leaving 12:30



Terraced paddy with magnificent views of Suruga Bay and Mt. Fuji at the same time. Selected as the 10 best paddy terraces in Shizuoka Prefecture.

30 mins
by bus

Arriving
13:00
Matsuzaki
Port

※ You can leave the bus at Izu Chohachi Art Museum and walk up to the summit.

Best time for flower viewing
Plum blossoms (end Jan-early Feb) Hydrangea (Jun-Jul)

★: Experience-based tourism

8. Port Area Walking Courses



10 (2) mins from the Port
13 Namakokabe Street
 Poetic street having buildings using namakokabe walls.



10 (1) mins from the Port
15 Matsuzaki Beach
 Shallow beach characteristic with its beautiful sand where waves are gentle.



8 (2) mins from the Port
6 Izu-Chohachi Art Museum
 Museum displaying a collection of plaster works of Chohachi who was a master plasterer.



2 mins from the Port
4 Fishermen's Cooperative Direct Sales Store
 Direct sales store offering Matsuzaki's specialty, "kawanori".



11 (2) mins from the Port
20 Benten Island
 Island of ubamegashi trees growing gregariously, which is rare even in Japan.



6 (1) mins from the Port
12 Nakase Residence
 Wooden architecture conveying how people lived in Meiji period.



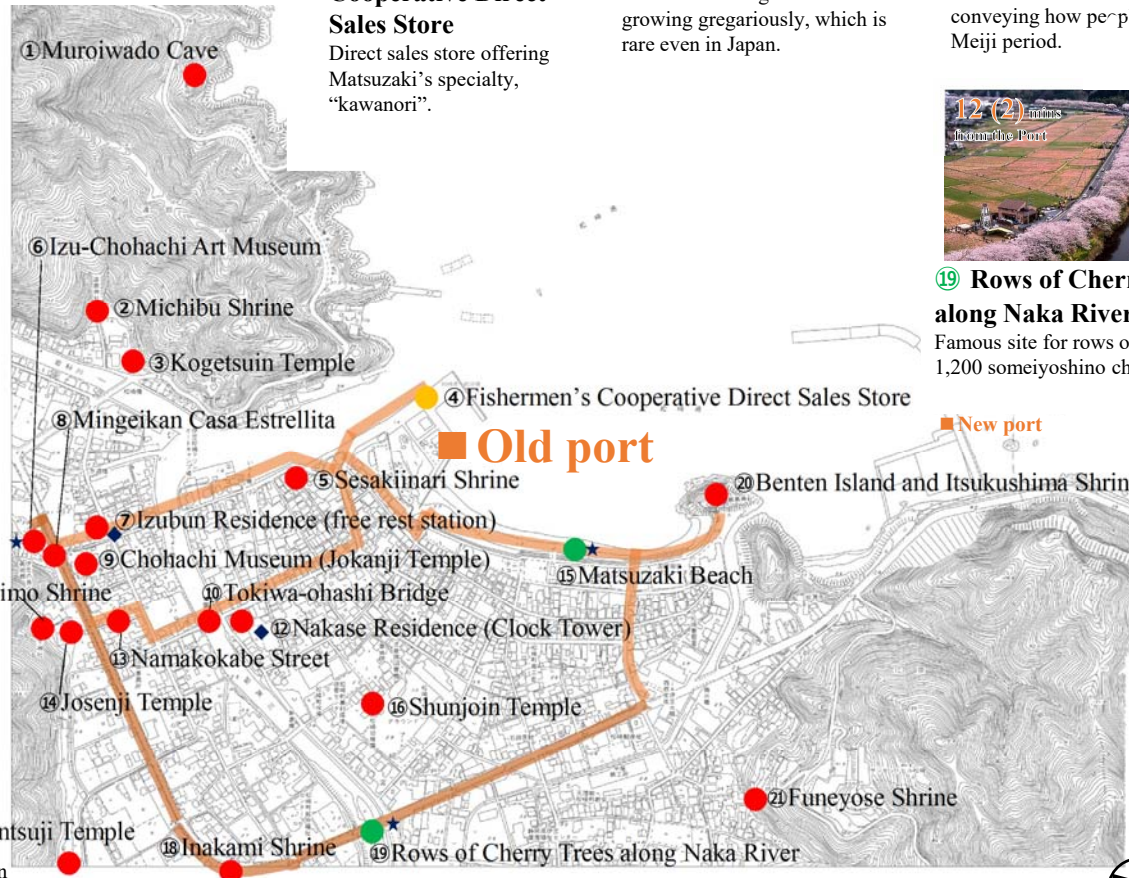
6 (1) mins from the Port
7 Izubun Residence
 Wooden architecture open to the public as free-of-charge visitor's rest station.



12 (2) mins from the Port
19 Rows of Cherry Trees along Naka River
 Famous site for rows of about 1,200 someiyoshino cherry trees.



7 (1) mins from the Port
9 Chohachi Museum
 Museum located in the premises of Jokanji Temple where a number of Chohachi's original plaster artworks are kept.



※Travel time is estimated on the assumption that the tourist walks from the Old Port. Time in parentheses is the travel time by car.

- Natural environment
- History, tradition and culture
- Hot springs
- Food
- ★ Experience-based tourism and seasonal events
- ◆ Hot bath facilities

