

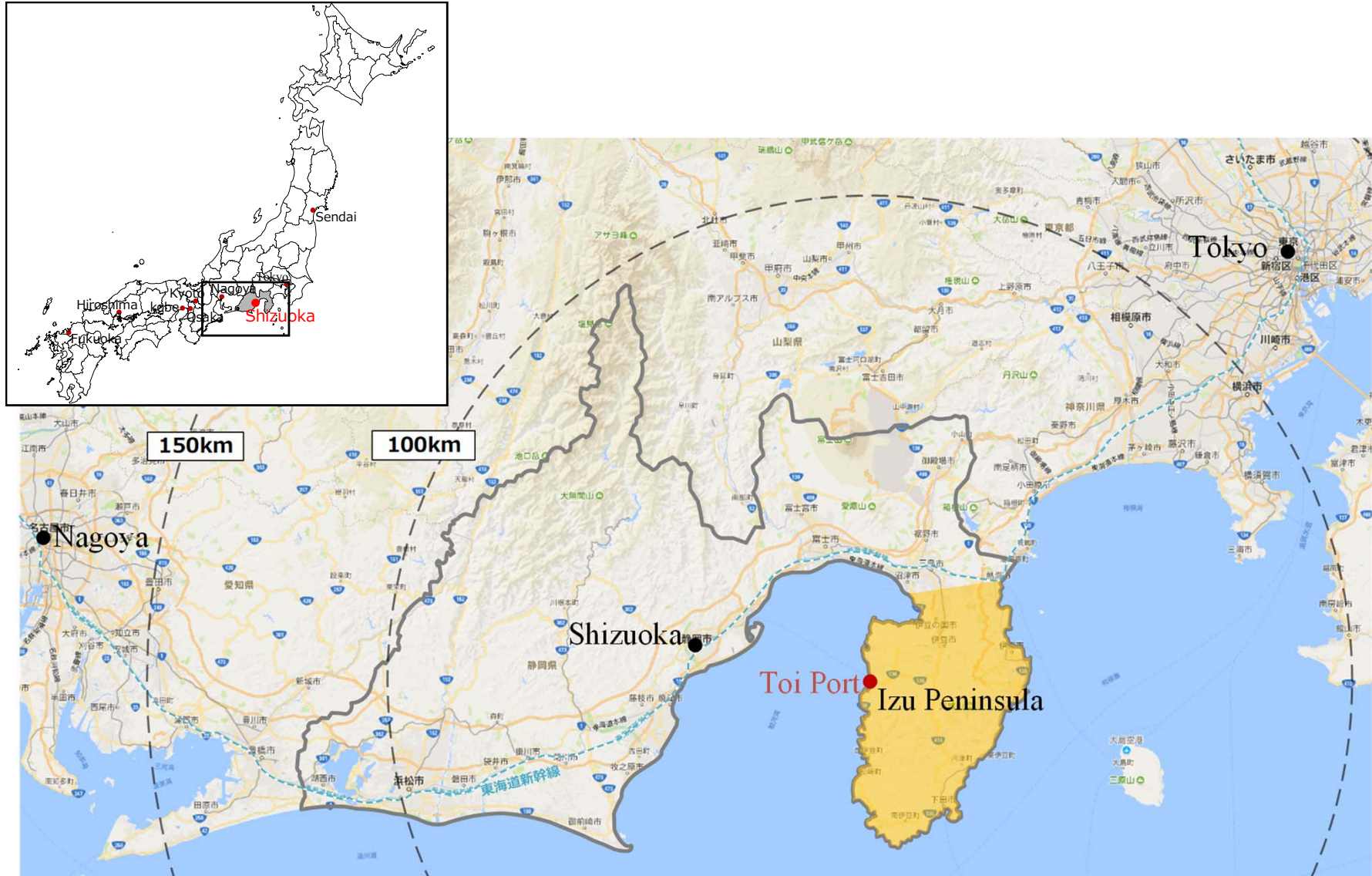
# Toi Port



Cape Koibito Misaki

Photo: Toi Onsen

# 1. Location of Toi Port



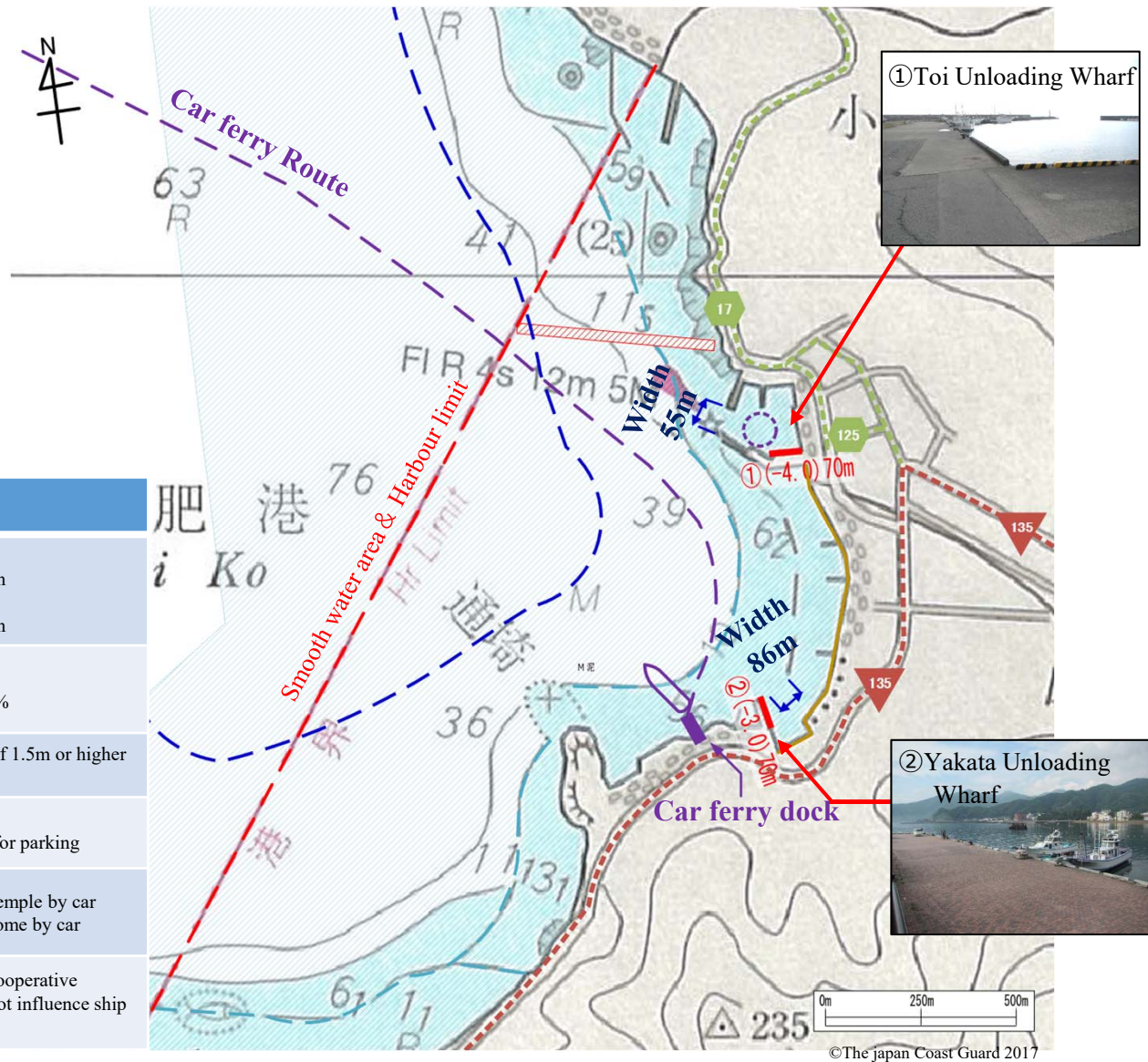
Map: Google Maps

# 2. Overview of Toi Port

## ■ Proposed anchoring and landing points

Legends	
	Tender boats' turning around area
	Wharf for boat to anchor
	National Highway
	Prefectural Highway
	Beach
	Width of harbor entrance
	Depth contour: 10m depth
	Depth contour: 40m depth (Roughly determined area usable for anchoring)
	Area for common fishery
	Fixed net installation position

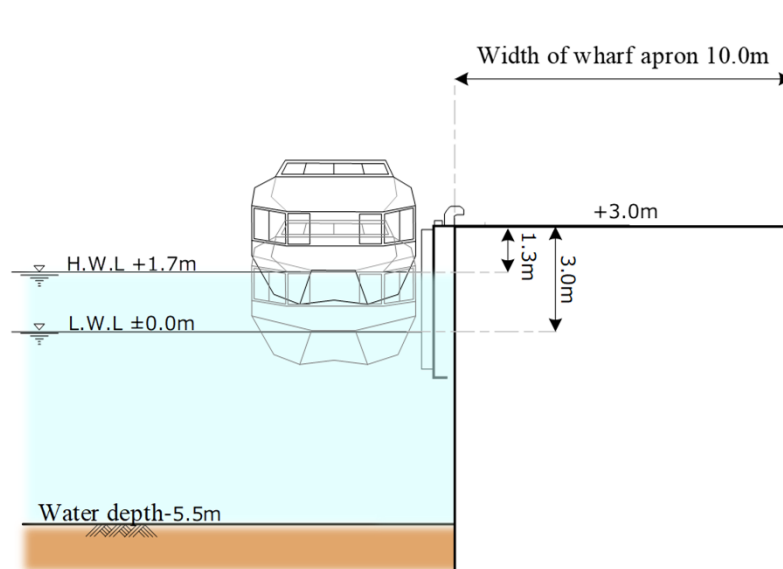
Item	Outline
Mooring facilities	[① Toi Unloading Wharf] 4.0m water depth and 70m length [② Yakata Unloading Wharf] 3.0m water depth and 70m length
Calmness (Limiting wave height: 0.5m)	① - ② - [Note] Car Ferry, Dolphin: 93.4%
Nautical condition	Open sea: 90% occurrence rate of 1.5m or higher waves
Use of land behind	① has enough space for parking ② has privately operated space for parking
Time required to major tourist attractions	• Approx. 33 mins to Shuzenji Temple by car • Approx. 60 mins to Izu Velodrome by car
Influence on fishery	• Those involved in fishery are cooperative • Fixed netting exists, but does not influence ship operations



# 3. Major Mooring Facilities

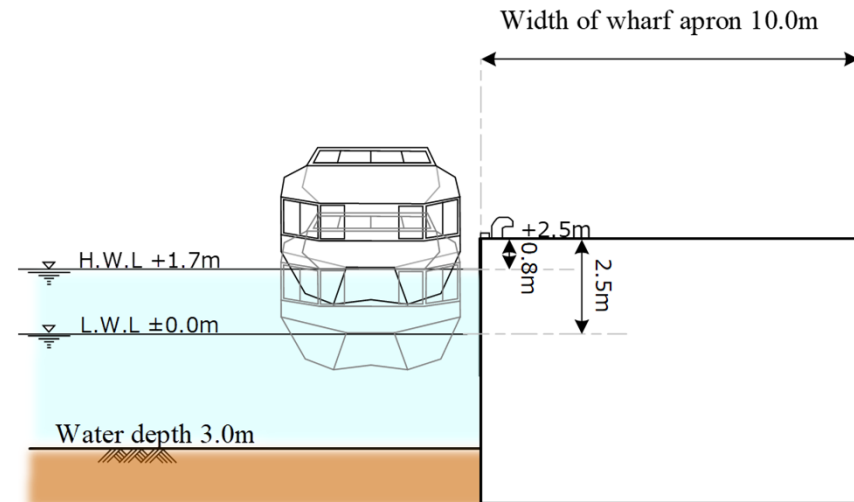
## ① Toi Unloading Wharf

Item	Outline
Berth size	[① Toi unloading wharf] Water depth: 4.0m; and Total length: 70m Crown height: H.W.L.+1.7m+1.0m L.W.L.±0m +2.7m Apron width: 10.0m



## ② Yakata Unloading Wharf

Item	Outline
Berth size	[② Yakata unloading wharf] Water depth: 3.0m; and total length: 70m Crown height: H.W.L.+1.7m +0.8m L.W.L.±0m +2.5m Apron width: 4.0m

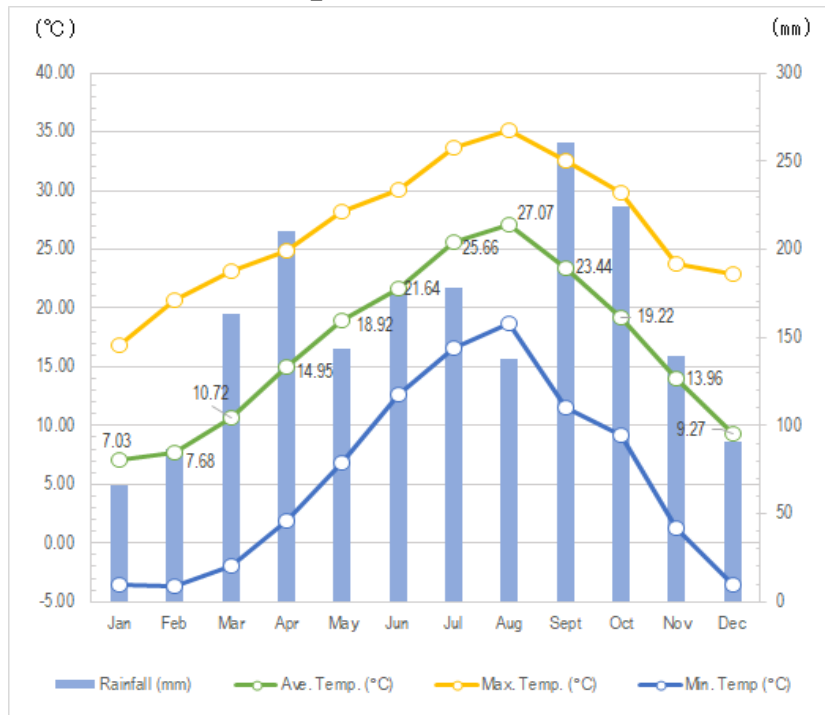


# 4. Toi Port Weather Conditions

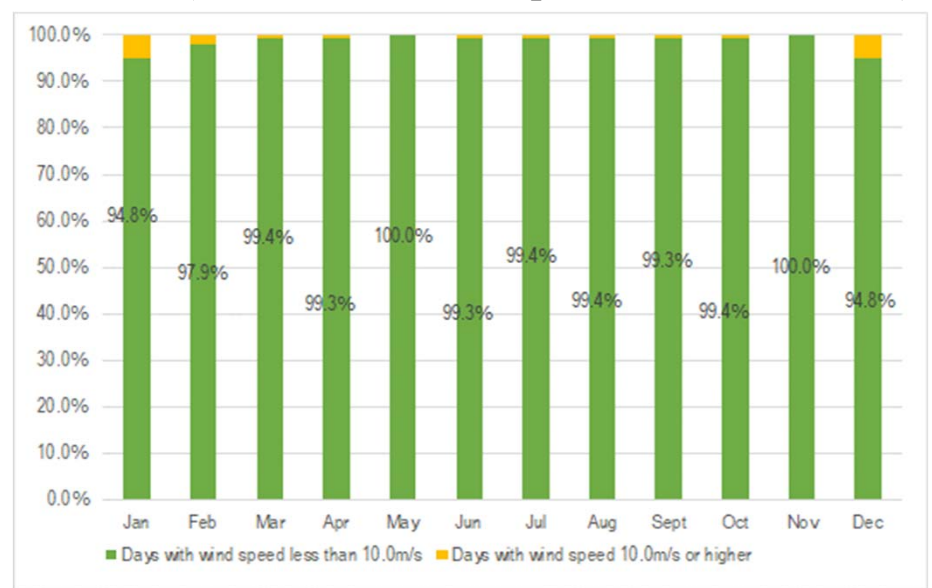
Suitable Port Call Timing (Weather Condition)	Throughout the year
Events	<ul style="list-style-type: none"> <li>• Special viewing of Shuzenji Temple Garden February – March</li> <li>• Best season for cherry blossoms at Michi-no-eki Amagigoe April</li> <li>• Toi Summer Festival August 18 - 20</li> <li>• Best seasons for flowers, etc. in Shuzenji Niji no Sato and Shuzenji Nature Park             <ul style="list-style-type: none"> <li>Plum blossoms February – March</li> <li>Iris June</li> <li>Autumn colors November – December</li> </ul> </li> </ul>

Best season for Toi Port  
**March - August**

○ Rainfall/Temperature



○ Wind (Incidence of wind speed less than 10m/s\*)



\*Incidence of days when the wind speed during the ship passage period of 8:00 to 17:00 is less than 10.0m/s based on hearings from shipping companies.

# 5. Flow Planning (1) (Planned use of Toi Unloading Wharf)

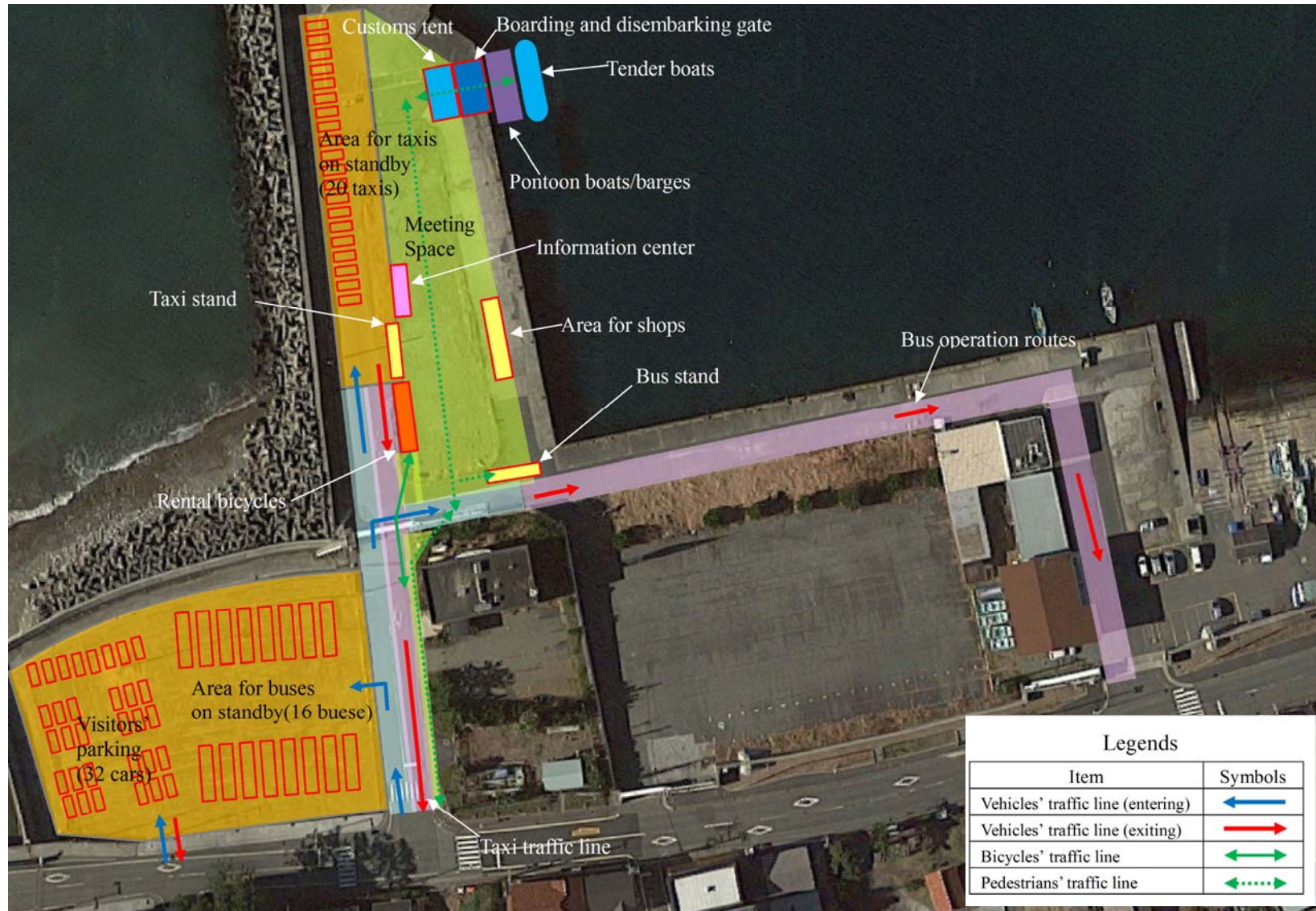


Photo: Google Earth

## 5. Flow Planning (2) (Planned use of Yakata Unloading Wharf)

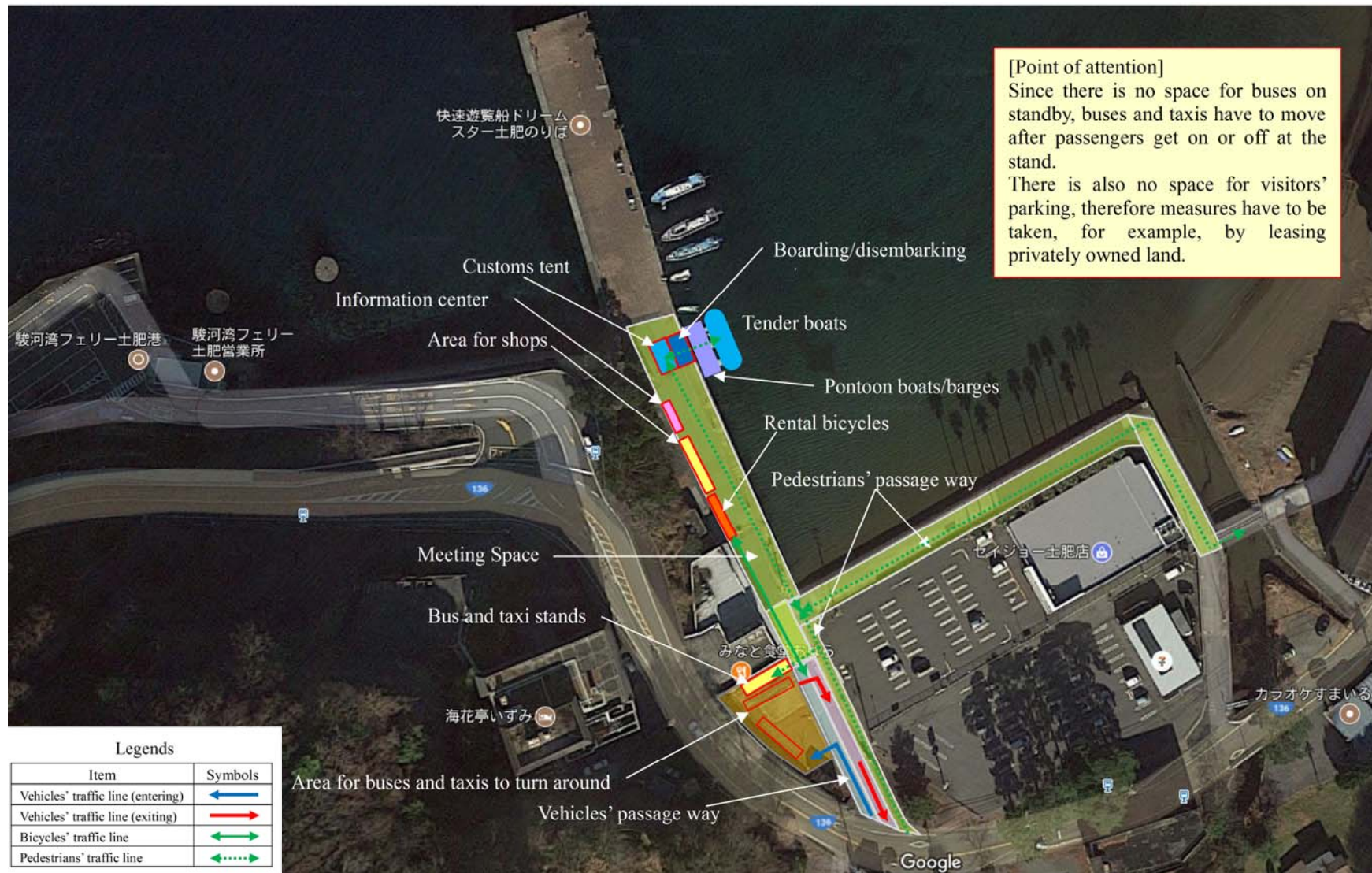


Photo: Google Earth

# 6. Regional Tourist Resources



**26 Cape Koibito Misaki**  
**Parking: 100 cars**  
 There is an observatory deck and a "love-call" bell.



**21 Joren-no-taki waterfall**  
**Parking: 100 cars**  
 One of the famous waterfalls of Shizuoka Prefecture.



**8 Shuzenji Temple, Oku-no-in**  
**Parking: None**  
 Kobo Daishi studied and practiced Buddhism here.

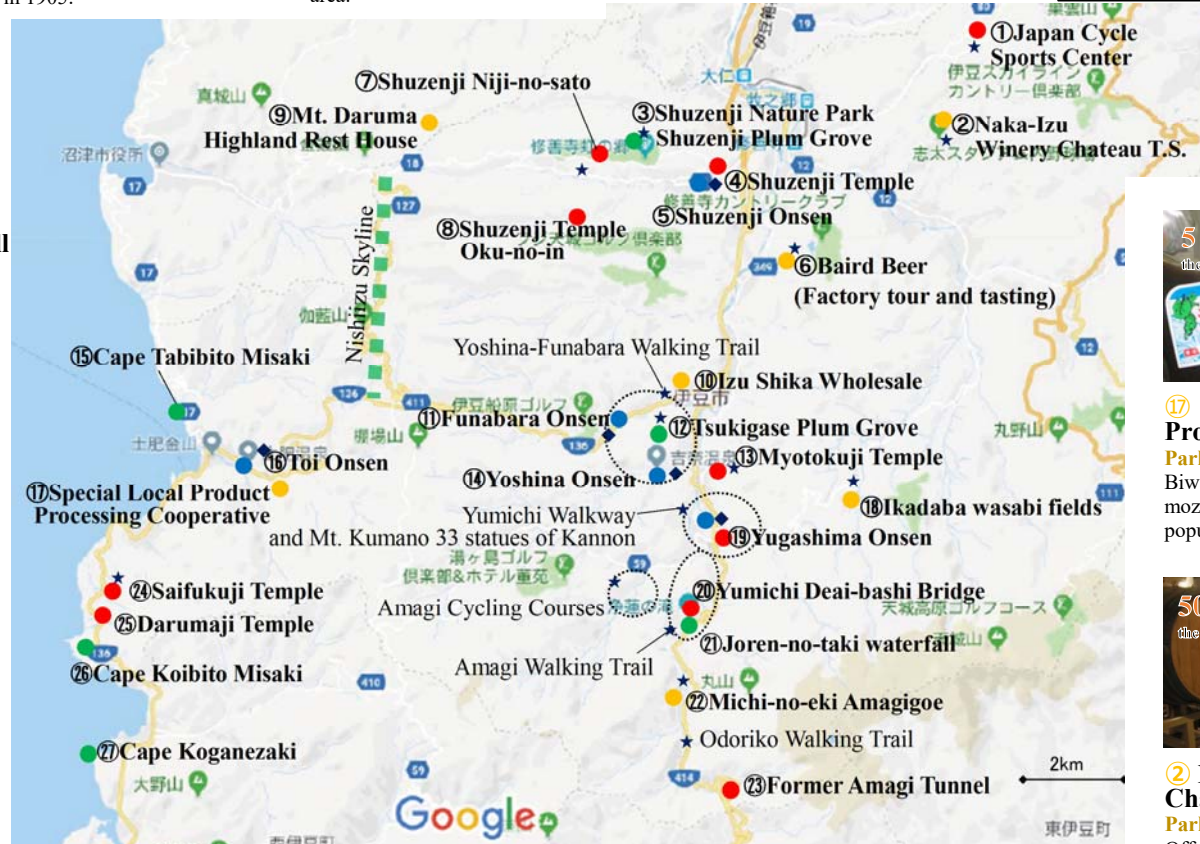


**23 Former Amagi Tunnel**  
**Parking: 15 cars**  
 Stone-built tunnel completed in 1905.



**16 Toi Onsen**  
**Parking: 75 cars**  
 Enjoying day trip onsen as well at the oldest onsen in Nishi-Izu area.

- Natural environment
- History, tradition and culture
- Hot springs
- Food
- ★ Experience-based tourism and seasonal events
- ◆ Hot bath facilities



**17 Special Local Product Processing Cooperative**  
**Parking: 15 cars**  
 Biwa loquat jam and wasabi mozuku seaweed are two of the popular products.



**2 Naka-Izu Winery Chateau T.S.**  
**Parking: 300 cars**  
 Offering a tour course for watching how wine is made.

Map: Google Maps



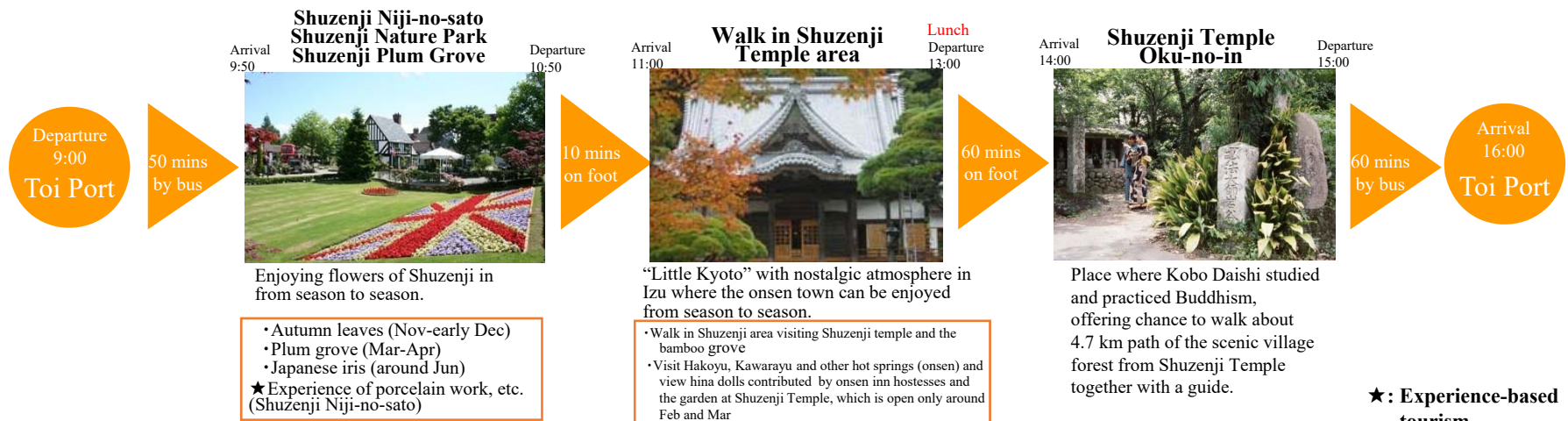
# 7. Optional Tour Plans ①

## ■ Shuzenji course (Time required: 7 hours)

### Shuzenji and Cycle Attraction Course



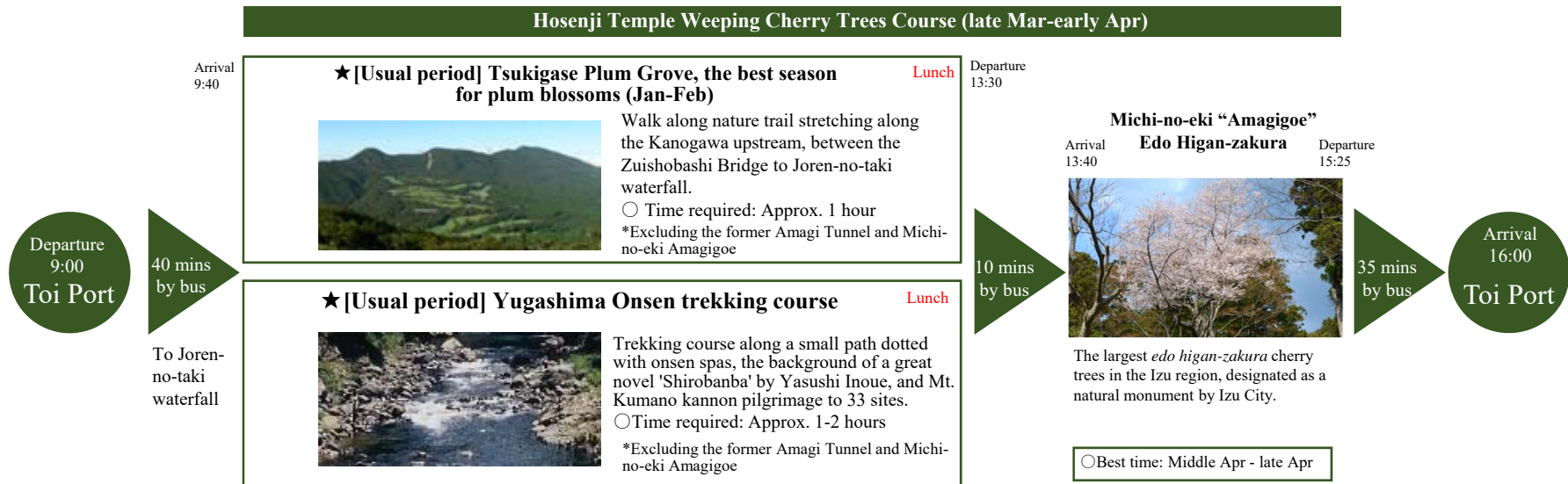
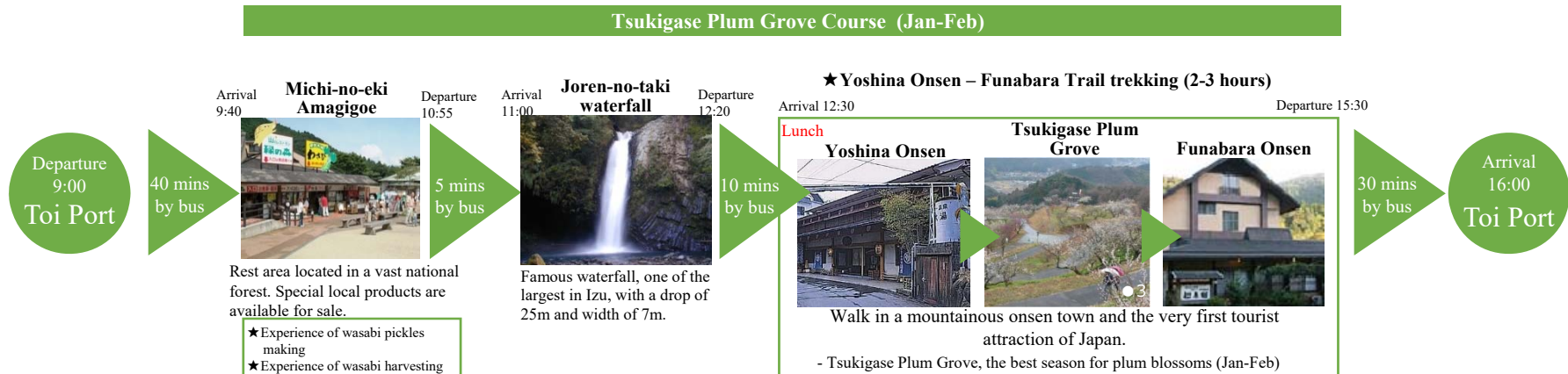
### Shuzenji Walking Course



# 7. Optional Tour Plans ②

## ■ Shuzenji Course (Time required: 7 hours)

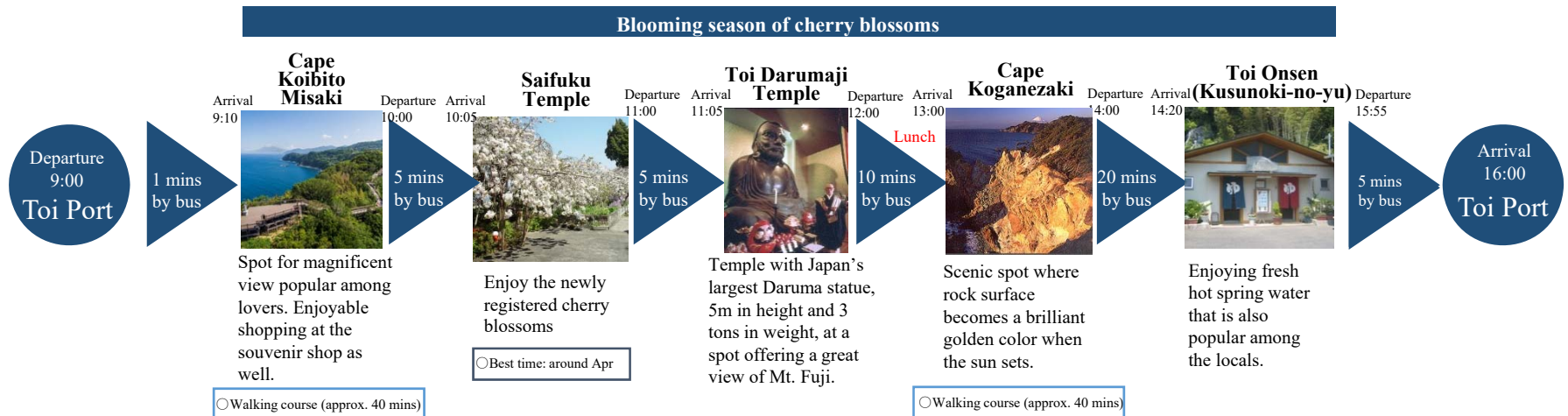
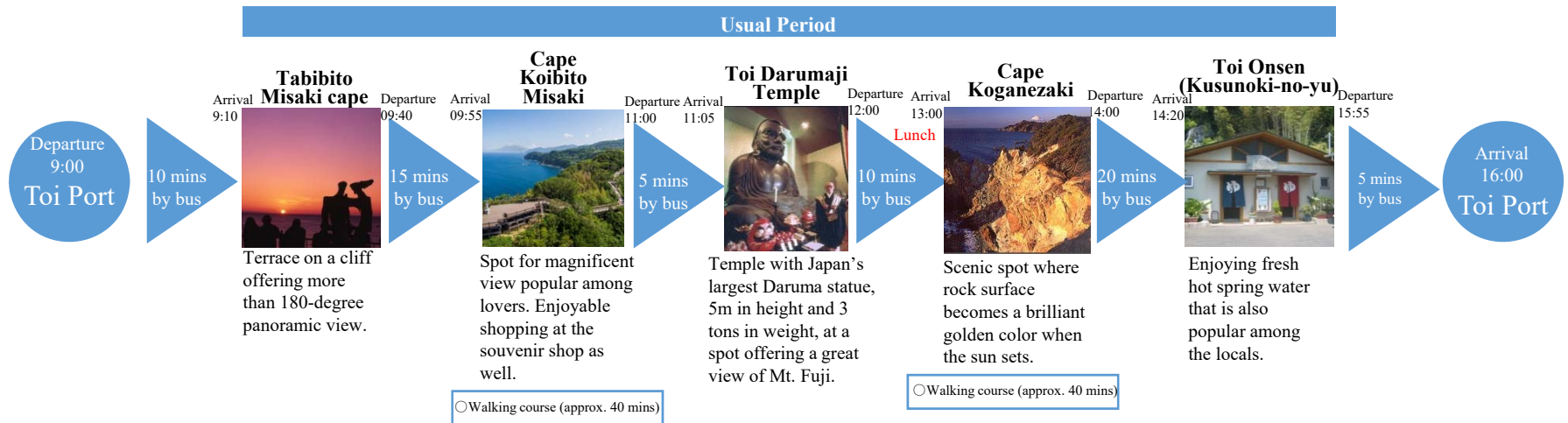
- Best time for flowers in bloom



★: Experience-based tourism

# 7. Optional Tour Plans ③

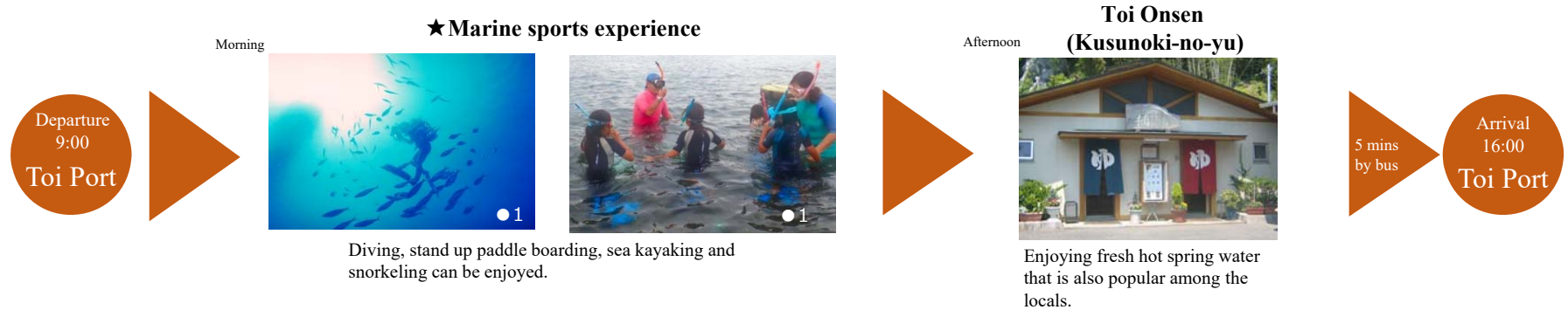
## ■ Suruga Bay Scenic Spots Course (Time required: 7 hours)



★: Experience-based tourism

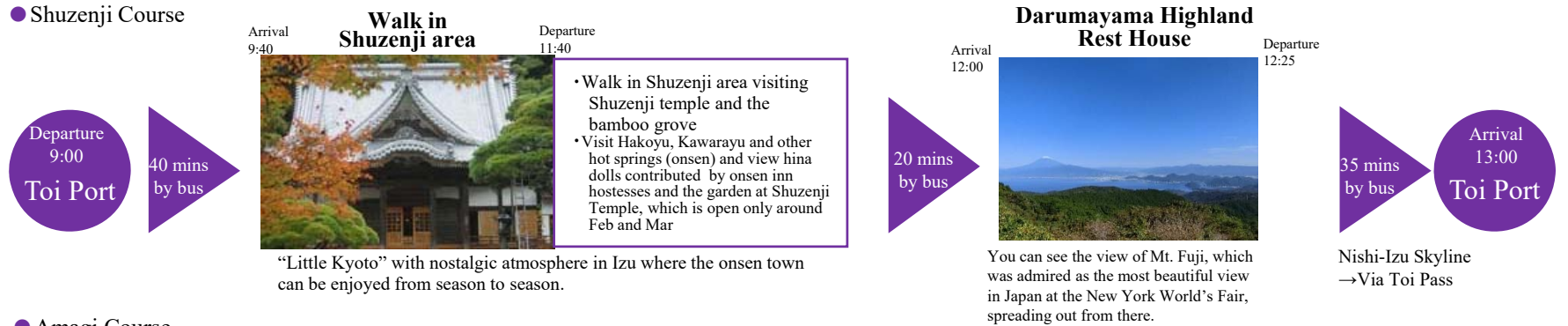
# 7. Optional Tour Plans ④

## ■ Marine Sports Experience Course (Time required: 7 hours)



## ■ Short Course (Time required: 4 hours)

### ● Shuzenji Course



### ● Amagi Course



# 8. Port Area Walking Courses



**⑤ Toi Gold Mine**  
Display of the world's largest gold ingot.



**④ Matsubara Park**  
The world's largest flower clock is the symbol of the town of flowers, Toi.



**⑬ Benten-no-yu**  
Public bath close to the town district.



**⑦ Toi Special Local Product Market, Arigato**  
Direct sales store to offer local products from Toi Onsen town.

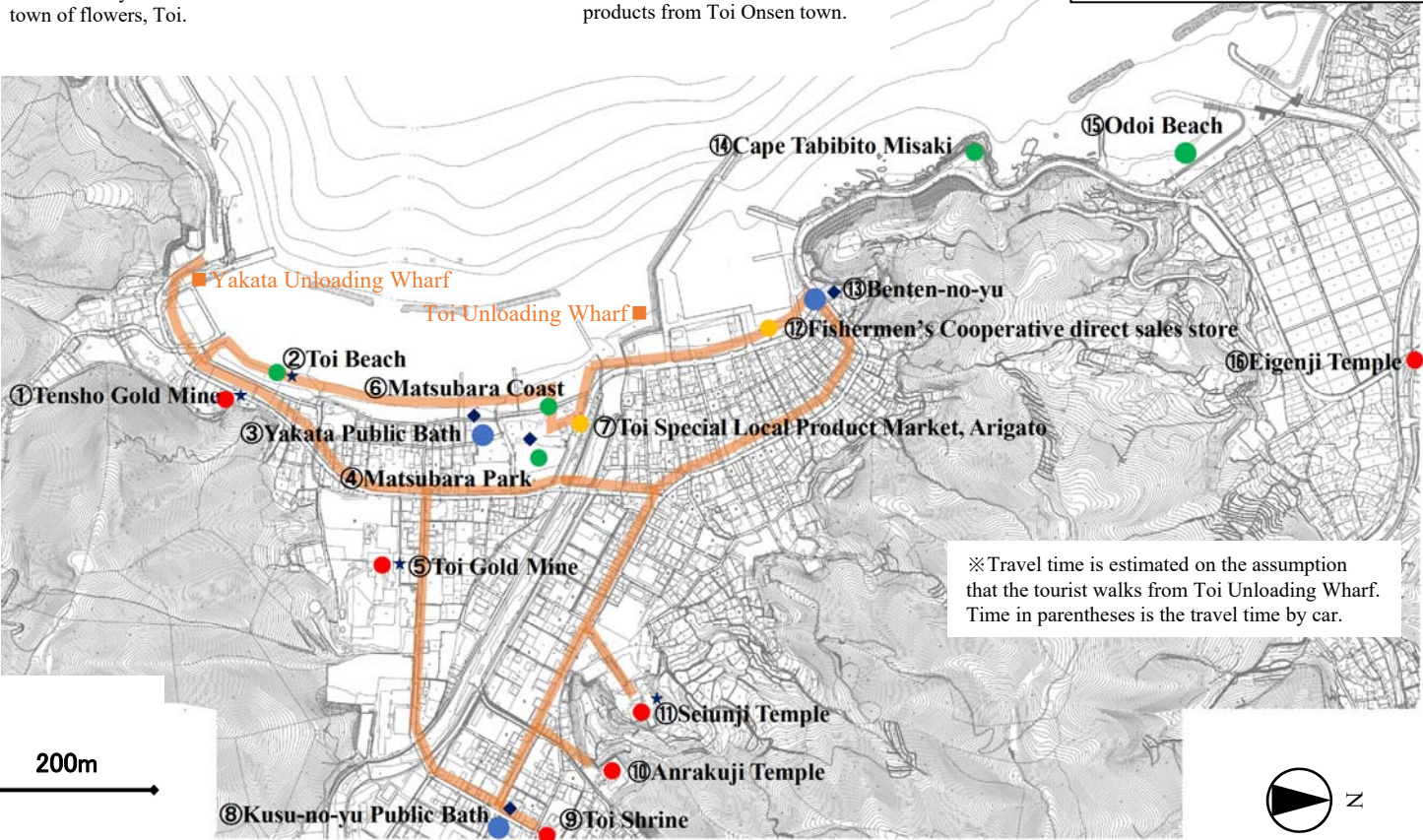
- Natural environment
- History, tradition and culture
- Hot springs
- Food
- ★ Experience-based tourism and seasonal events
- ◆ Hot bath facilities



**① Tensho Gold Mine**  
The first gold mine discovered in Izu.



**⑩ Anrakuji Temple**  
Soto Zen temple and the 86th fudasho of the Izu 88 temples. The tunnel toward the end of the temple grounds has "Mabuyu", a hot spring originating from Toi Onsen.



※Travel time is estimated on the assumption that the tourist walks from Toi Unloading Wharf. Time in parentheses is the travel time by car.