

Numazu Port



In-port of Numazu Port

Photo: Presented by Numazu City

1. Location of Numazu Port



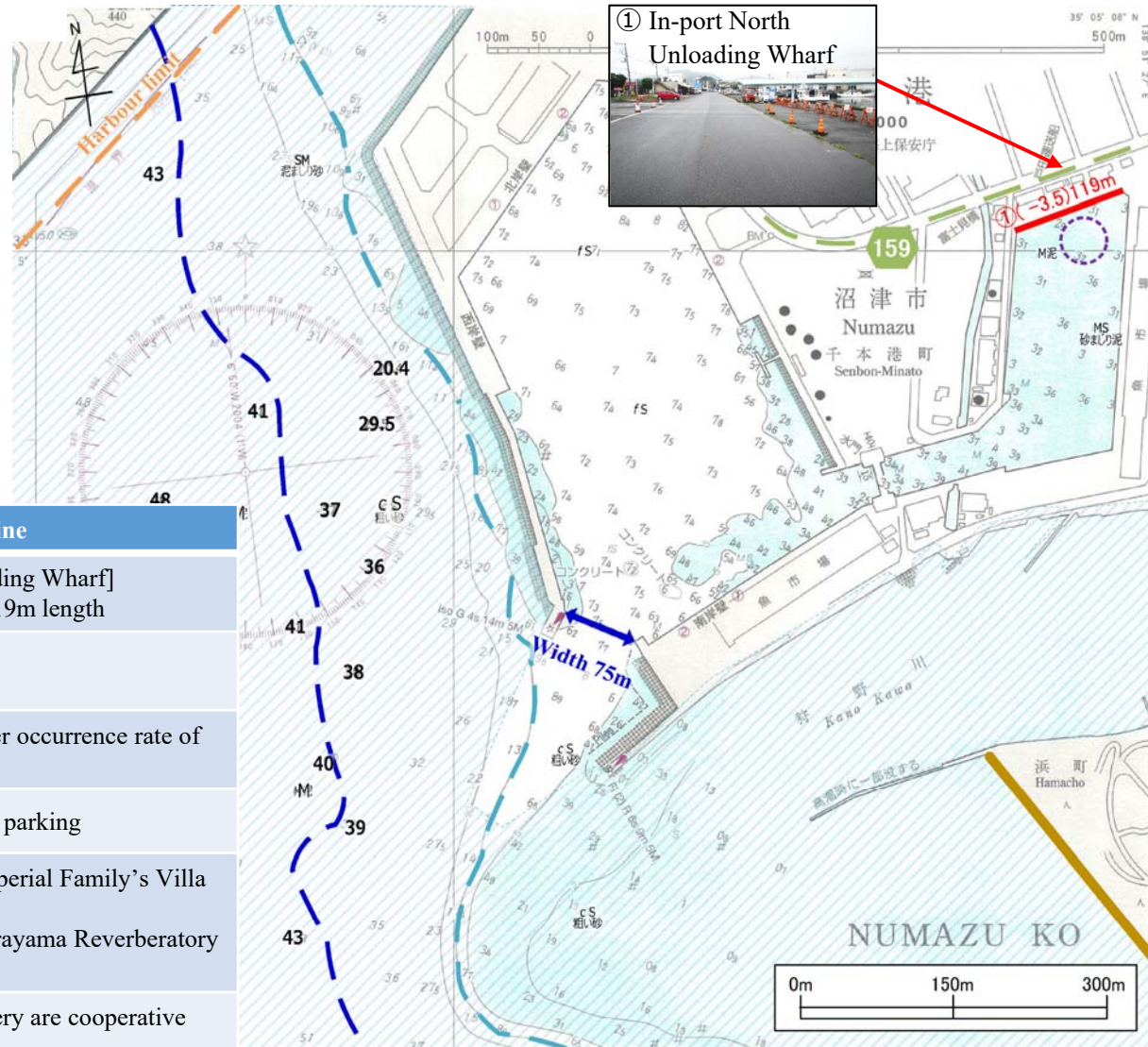
Map: Google Maps

2. Overview of Numazu Port

Proposed anchoring and landing points

Legends

- Tender boats' turning around area
- Wharf for boat to anchor
- National Highway
- Prefectural Highway
- Beach
- Width of harbor entrance
- Depth contour: 10m depth
- Depth contour: 40m depth (Roughly determined area usable for anchoring)
- Area for common fishery



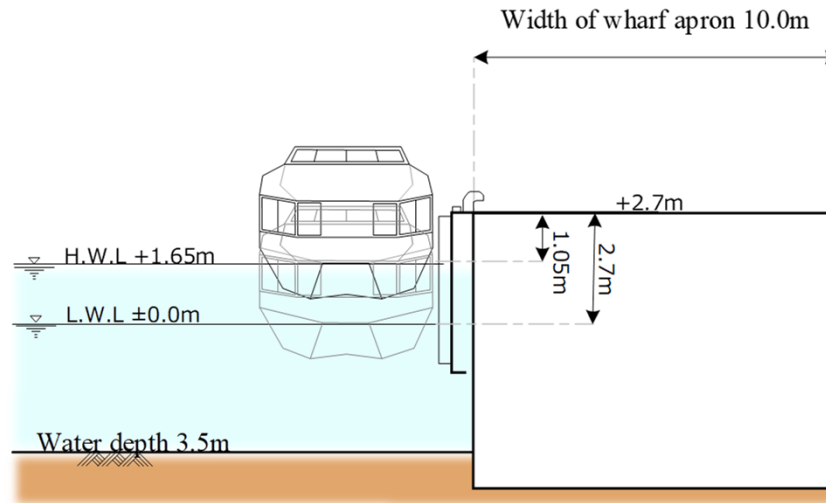
Item	Outline
Mooring facilities	[①In-port North Unloading Wharf] 3.5m water depth and 119m length
Calmness (Limiting wave height: 0.5m)	① 99.9%
Nautical condition	Open sea: 90% or greater occurrence rate of 1.5m or higher waves
Use of land behind	① has enough space for parking
Time required to major tourist attractions	<ul style="list-style-type: none"> • Approx. 15 mins to Imperial Family's Villa by car • Approx. 30 mins to Nirayama Reverberatory Furnaces by car
Influence on fishery	<ul style="list-style-type: none"> • Those involved in fishery are cooperative • No fixed netting

©The Japan Coast Guard 2017

3. Major Mooring Facility

① In-port North Unloading Wharf

Item	Outline
Berth size	[① In-port North Unloading Wharf] Water depth: 3.5m; and Total length: 10m Crown height: H.W.L.+1.65m +1.05m L.W.L.±0.00m +2.70m Apron width:10.0m



4. Numazu Port Weather Conditions

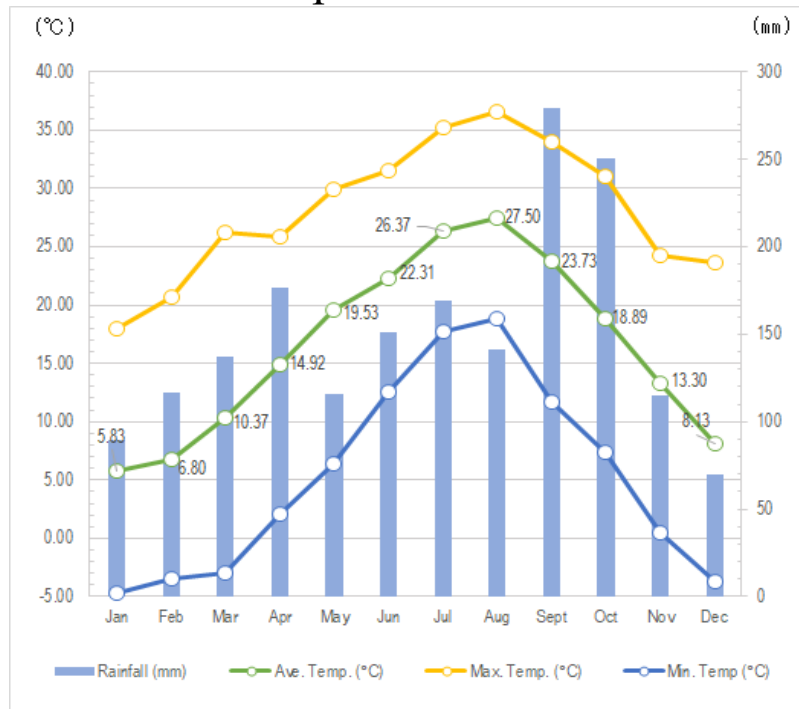
Suitable Port Call Timing (Weather Condition)	Throughout the year
Events	<ul style="list-style-type: none"> Strawberry picking January - May Viewing of Shuzenji Temple Garden February - March Kano River Fireworks Festival The last Saturday and Sunday of July Yosakoi Tokaido Dance Festival The second Saturday of November



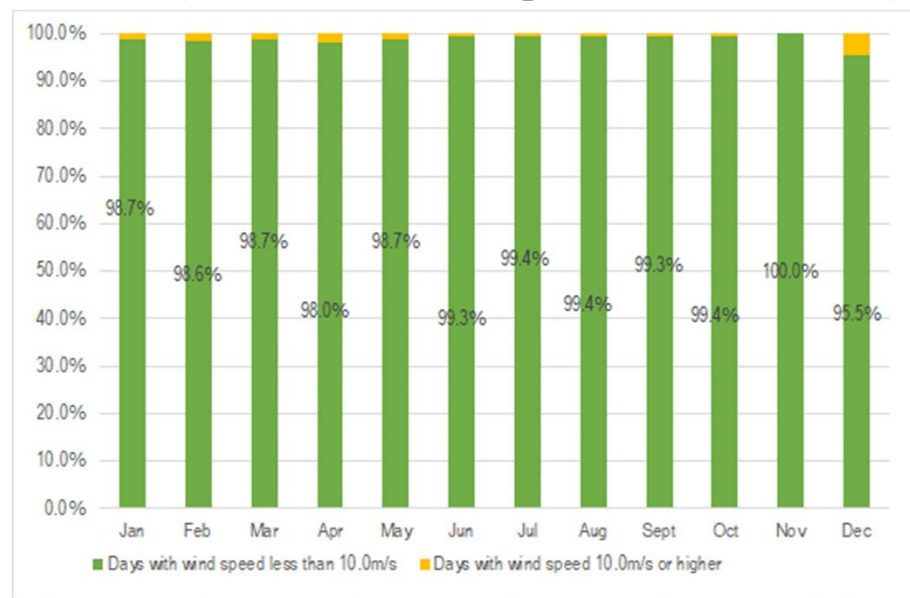
Best season for Numazu Port

January - July

○ Rainfall/Temperature



○ Wind (Incidence of wind speed less than 10m/s*)



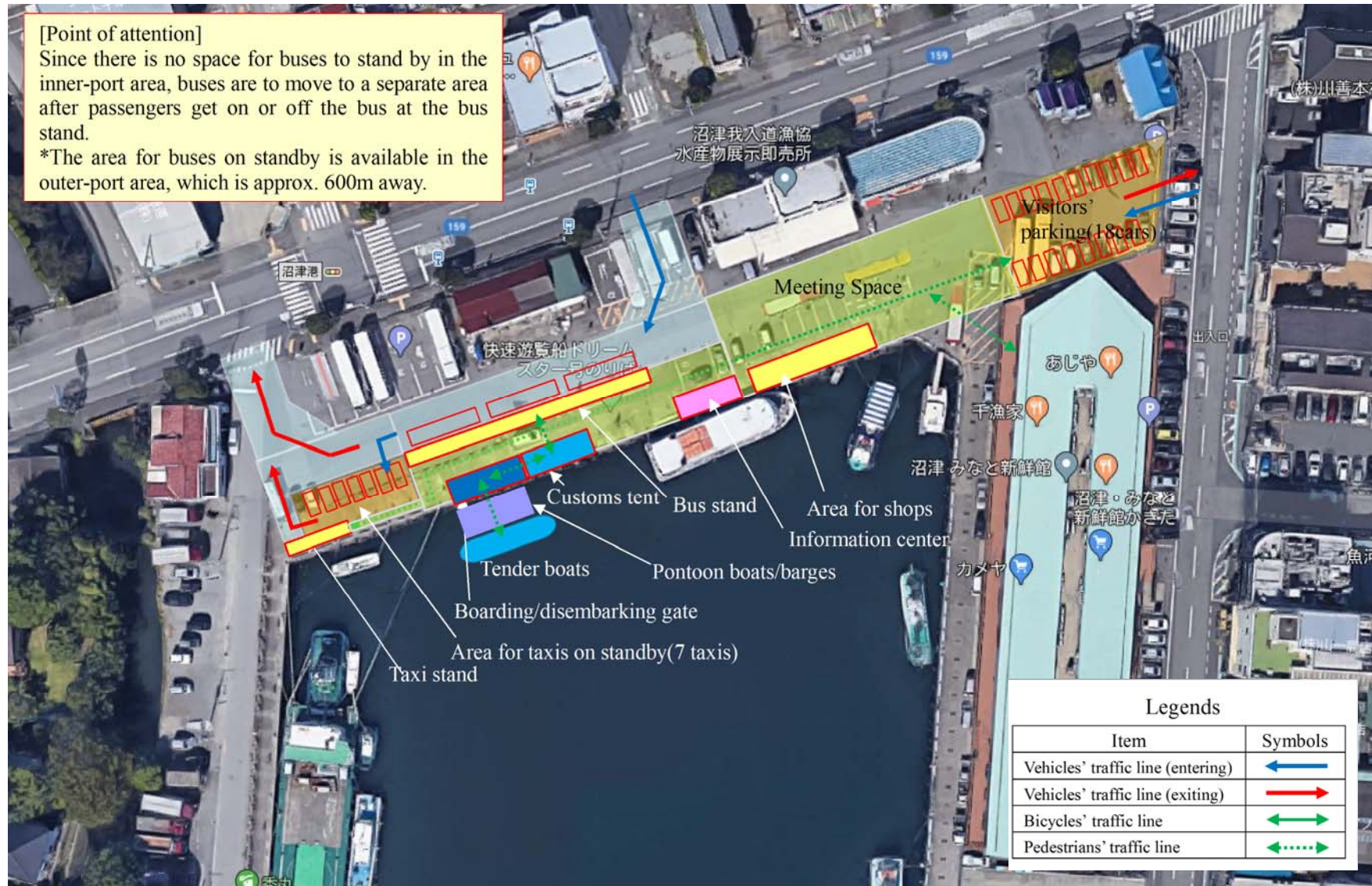
* Incidence of days when the wind speed during the ship passage period of 8:00 to 17:00 is less than 10.0m/s based on hearings from shipping companies.

5. Flow Planning (Planned use of the In-port North Unloading Wharf)

[Point of attention]

Since there is no space for buses to stand by in the inner-port area, buses are to move to a separate area after passengers get on or off the bus at the bus stand.

*The area for buses on standby is available in the outer-port area, which is approx. 600m away.



Legends	
Item	Symbols
Vehicles' traffic line (entering)	← (Blue arrow)
Vehicles' traffic line (exiting)	→ (Red arrow)
Bicycles' traffic line	↔ (Green arrow)
Pedestrians' traffic line	⋯↔⋯ (Dotted Green arrow)

Photo: Google Earth

6. Regional Tourist Resources



④ Mt. Ushibuse Park
Parking: 23 cars
 Park with a great view of Okusuruga Bay.



⑦ Nirayama Reverberatory Furnaces
Parking: 50 cars
 Designated world heritage site and the only remaining commercial reverberatory furnace in Japan.



⑫ Shuzenji hot springs
Parking: 73 cars and for 10 large vehicles
 Renowned hot spring designated as one of 100 famous spas in Japan.



⑬ Michi-no-eki, Kurura Heda
Parking: 42 cars and 3 large vehicles
 Facilities acting as a local revitalization center.



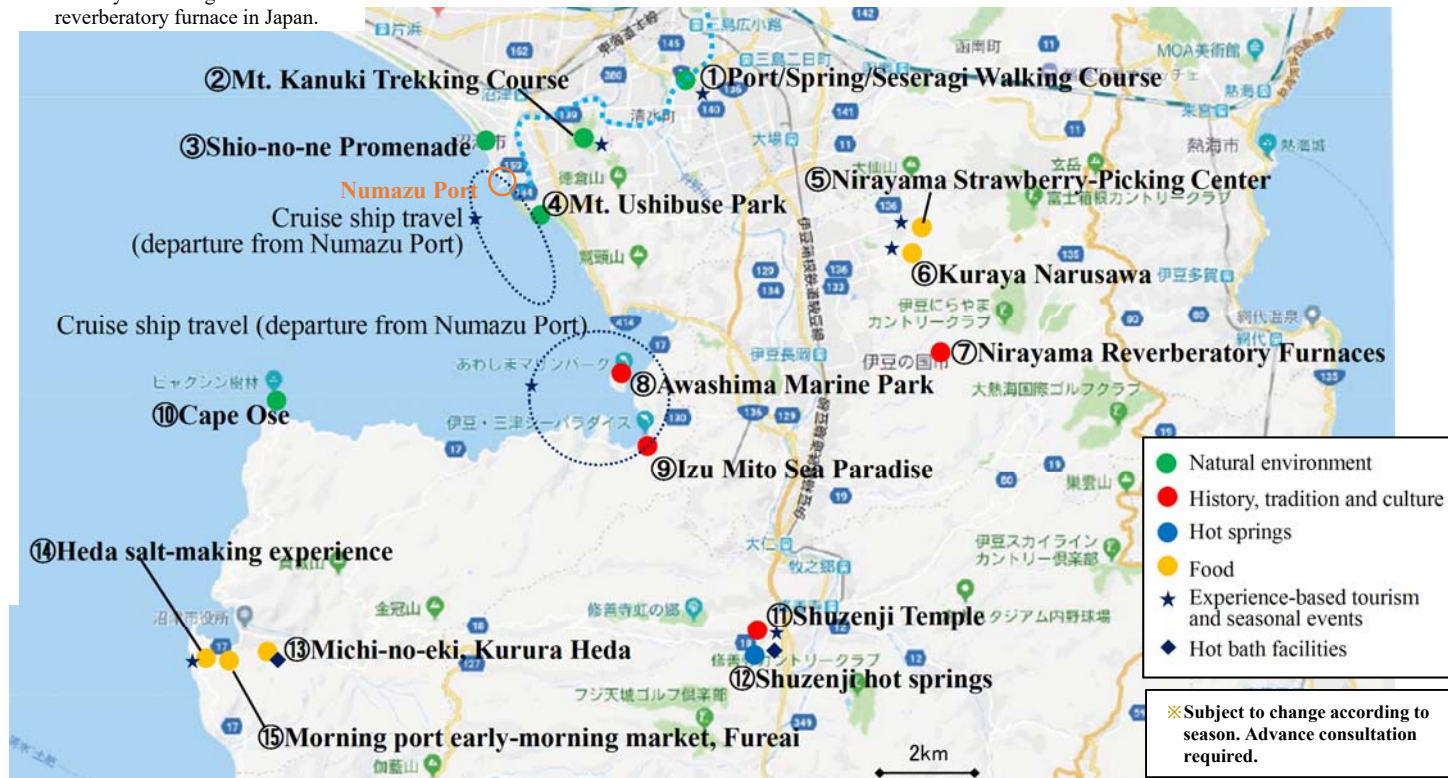
⑭ Heda salt-making experience
Parking: about 100 cars※
 Offering hands-on experience of traditional old salt making.



⑩ Cape Ose
Parking: 300 cars
 Offering a view of the most magnificent mountain of Japan, Mt. Fuji, across the sea.



⑧ Awashima Marine Park
Parking: 150 cars
 The whole island offers a range of leisure activities.



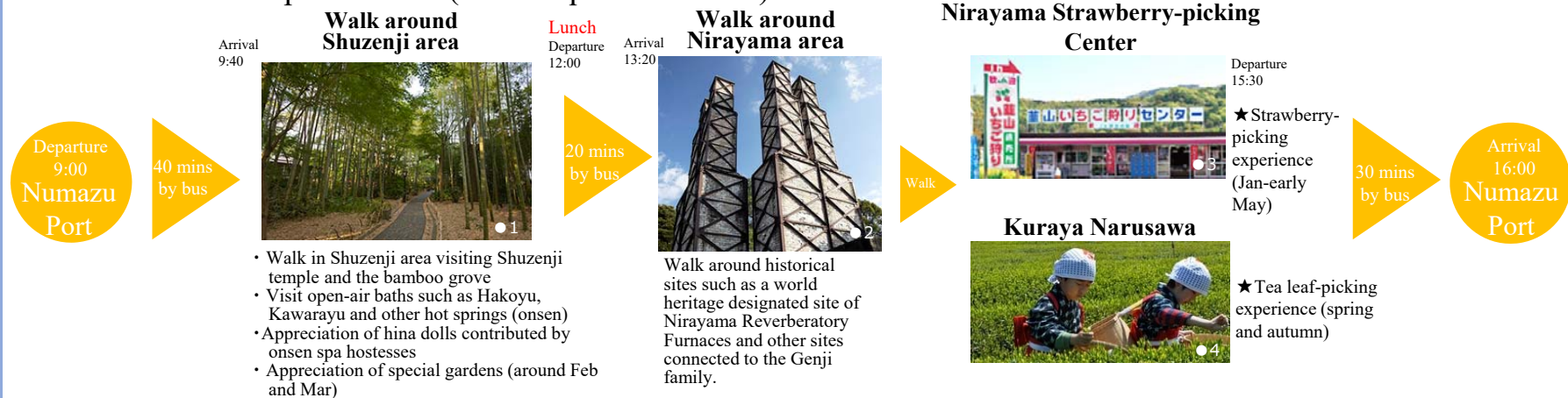
- Natural environment
- History, tradition and culture
- Hot springs
- Food
- ★ Experience-based tourism and seasonal events
- ◆ Hot bath facilities

※ Subject to change according to season. Advance consultation required.

Map: Google Maps

7. Optional Tour Plans ①

■ Nakaizu Scenic Spots Course (Time required: 7 hours)



■ Sannoura and Heda Course (Time required: 7 hours)



7. Optional Tour Plans ②

■ Town Area Walk Course (Time required: 7 hours)

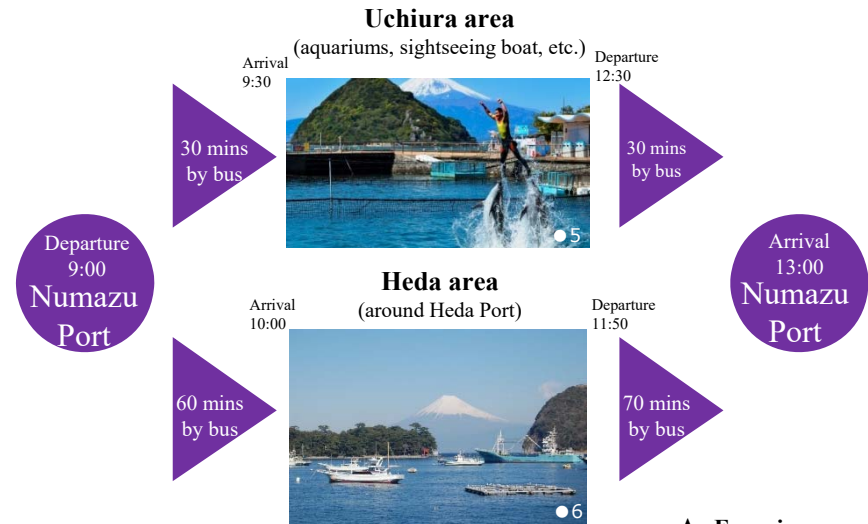


■ Short Course (Time required: 4 hours)

- Shuzenji Temple and Nirayama Historical Spots Course



- Uchiura and Heda Course



★: Experience-based tourism

8. Port Area Walking Courses



① Numazu Port Restaurant Street

Street lined with restaurants where you can enjoy fresh seafood from the Port.



⑥ Numazu Deepblue Aquarium

The first aquarium in Japan mainly exhibiting deep sea creatures.



⑪ Ganyudo Ferry Jetty

Magnificent view of Mt. Fuji from this ferry boat is a must-see.



⑬ Shio-no-ne Promenade

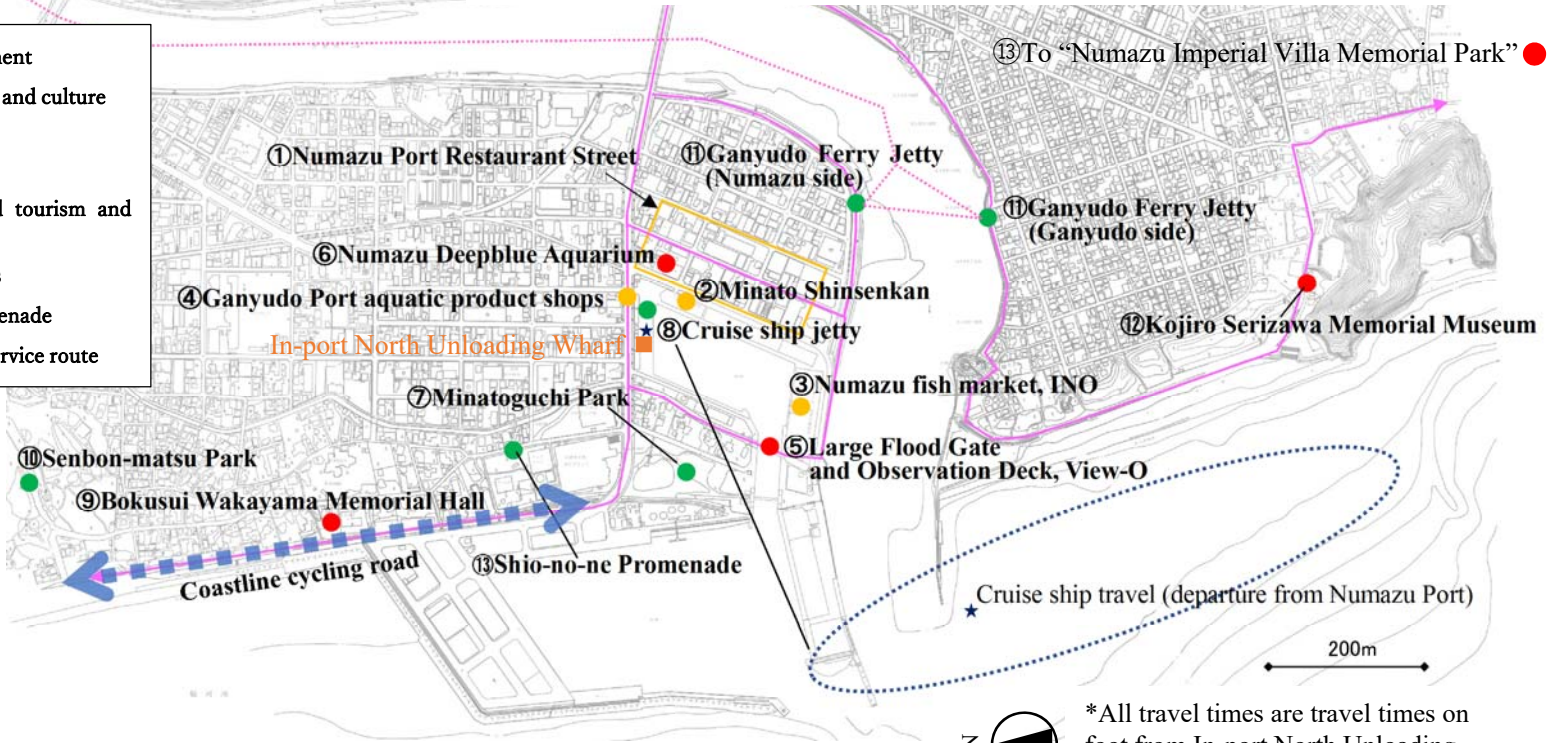
Promenade from Senbon Matsubara pine forest to Shige Beach, favored by many novelists and celebrities.



⑤ Large Flood Gate and Observation Deck, View-O

Offering a 360-degree panoramic view from 30m above ground.

- Natural environment
- History, tradition and culture
- Hot springs
- Food
- ★ Experience-based tourism and seasonal events
- ◆ Hot bath facilities
- Shio-no-ne Promenade
- Ganyudo Ferry service route



*All travel times are travel times on foot from In-port North Unloading Wharf.